

DialogClassic Web™

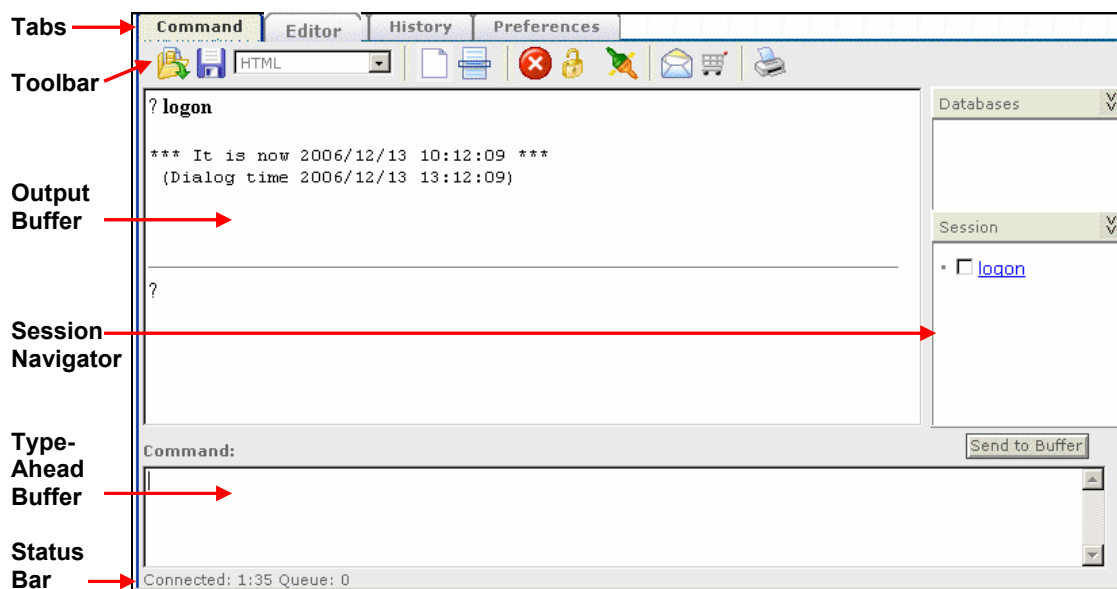
Quick Reference Guide

DialogClassic is designed for professional researchers who need high-speed access to classic Dialog. The latest release of *DialogClassic Web*™ preserves all of the functionality of previous versions and contains a new graphical interface, enhanced features and new commands. This Quick Reference Guide illustrates the new interface and describes enhanced and new commands so you can get started easily using this new interface.

DialogClassic Web Work Area

At startup, *DialogClassic Web* automatically opens the Command window. A "Tab" based interface allows easy navigation between Command search sessions, the History window, the Editor window and Preferences. It supports lengthy and complex searches with no software to install.

In this section we'll identify all parts of the Home screen as shown below. It is divided into three panes: a Type-Ahead Buffer, an Output Buffer and a Session Navigator.













Tabs - Four tabs at the top of the screen let you move from your current search session to previous search sessions or to text that you have marked for later use.

- The **Command** tab is where you enter search statements and view results. You can enter and edit your search before going online and type search statements at your own pace while connected.
- The **Editor** tab contains text that you have marked from a search session. When you select content in the Output buffer and use the **Mark** function, the selection is automatically copied and pasted into the Editor tab. The contents of the Editor pane may be edited and saved in a variety of formats.
- The **History** tab displays a list of your search sessions in the Sessions pane. The sessions are grouped by date and BEGIN command. Commands for the searches display in the Command window.
- The **Preferences** tab lets you set options such as size of images, KWIC window, term highlighting and more.

DialogClassic Web: Quick Reference Guide

Toolbar – The Toolbar includes buttons for standard Windows operations, as well as buttons for DialogClassic Web features.

-  **Load Script icon** - Click to display the Load a Script window. Double click a file name to load the script into the Type-Ahead buffer.
-  **Save icon** – Click to save results and choose the format from the drop-down menu: HTML, Text, Microsoft® Word and Adobe Acrobat PDF.
-  **Clear Buffer icon** - Click to clear all or individual buffers, including the Output, Type-Ahead and Session.
-  **Mark icon** - Click to move highlighted text from the Retrieve buffer to the Marked tab.
-  **Stop icon** - Click to stop processing a search statement at the next logical break point.
-  **Padlock icon** - Click to lock and unlock the Type Ahead buffer for the construction and execution of multiple line searches.
-  - **Logoff/logon icon** – Click to logon or logoff the Dialog service.
-  **Envelope icon** - Click to send an e-mail for help to the Dialog Knowledge Center.
-  **Order Documents icon** – Click to connect to the SourceOne service for Document Delivery and the Thomson Patent Store.
-  **Print icon** – Click to bring up the Print dialog box to utilize the printer options on your computer and print documents or marked text.

Output Buffer - The Output buffer records and displays your online session. When you are connected to the Dialog service, DialogClassic Web sends your searches from the Output buffer to the service at the appropriate time. The commands and the system responses display in the Retrieve buffer.

Type-Ahead Buffer - The Type Ahead buffer lets you compose, edit and execute sophisticated queries.

Session Navigator - The Session Navigator contains two panes: Databases and Session.

- Databases pane – Click to link to the Bluesheet for the database you are searching.
- Session pane – Contains all search statements from current searches. Check a box in the Session Navigator to re-execute the command.
- To move search statements from the list to the Type-Ahead buffer, check the statement(s) and click .

Status Bar – The Status bar shows you how long you have been connected to Dialog, what commands are in the queue, and how long the current command has taken to execute.

DialogClassic Web: Quick Reference Guide

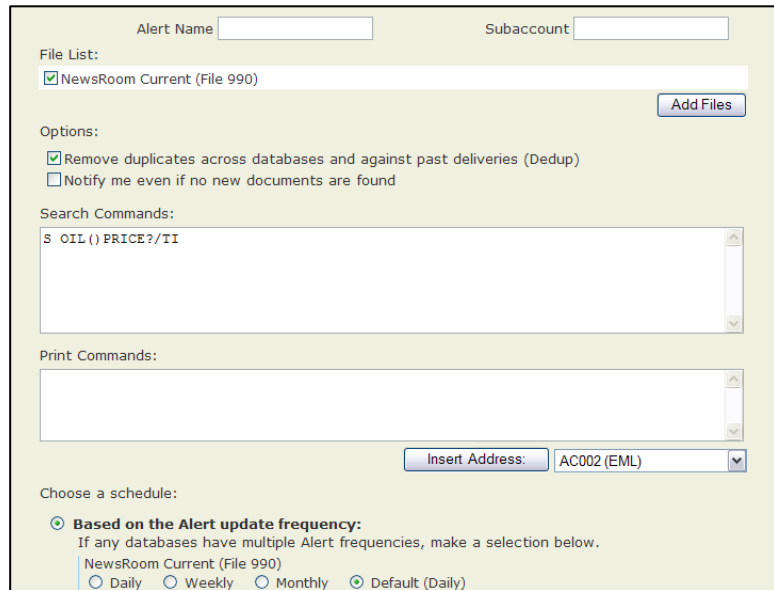
Enhanced Commands

Some commands have been enhanced with a new, graphical interface. Fill in screens are available to set up Alerts and edit Profiles and SearchSaves.

Set up an Alert

Alerts are a convenient way to set up a search to run automatically at a frequency you specify or when the database is updated. To set up an Alert, run a search in the database(s) of interest and enter SAVE ALERT. The Alert window makes it easy to create and store a Dialog Alert.

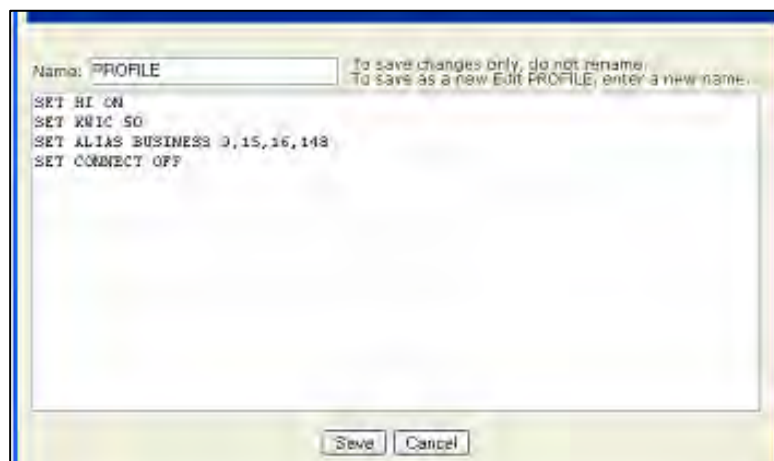
- Enter a name for the Alert.
- Choose a schedule to run the Alert, either when the database is updated or a schedule of your choosing.
- Select appropriate options.
- Review the search commands.
- Send to an e-mail address
- Click Save to save the Alert.



Note: You can modify an Alert by typing the command: EDIT ALERT <Alert name>. The Alert window will open with the options displayed for the specified Alert. Make any desired changes to the Alert options and click the Save button at the bottom of the Alert window.

Edit Profiles

- Your Profile specifies default settings for your User ID, such as default delivery address, highlighting, subaccount, cost display, etc. The settings are applied using the SET command. See the *Dialog Pocket Guide* for more detail.
- Some of the Profile settings are available by clicking the Preferences tab (e.g., highlighting, KWIC window size).

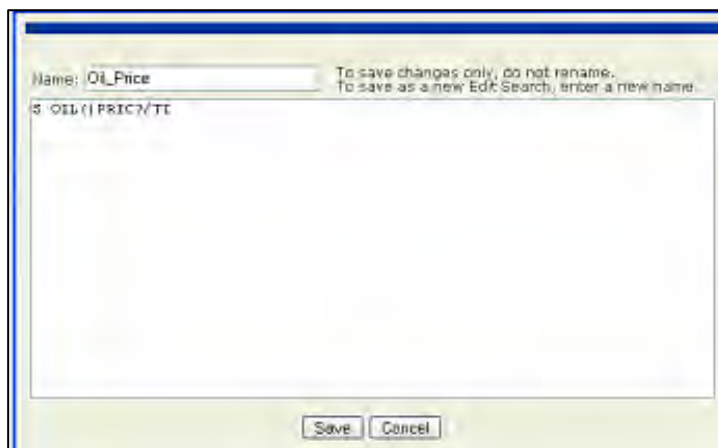


DialogClassic Web: Quick Reference Guide

Edit SearchSaves

If you have previously saved a search strategy (SearchSave) using the SAVE command, you can edit it later without redoing your search.

- Type EDIT <SearchSave name>.
- The EDIT window displays. Make any changes to your search strategy directly in the window. You can also give the SearchSave a new name. Click Save to save your changes.



New Features and Commands

Several new features are available in the 2007 release of DialogClassic Web. They include:

- Dialog eLinks
- Chemical structure searching
- New output options

Dialog eLinks

Dialog eLinks offers hyperlinks to the fulltext of journal articles and other publications from over 100 providers. Click the link to view the fulltext. Note that for access to copyrighted journals, you must have a subscription with the publisher in order for the links to display in the output.

Dialog eLink: [FullText](#)

1991
MEDLINE®
(c) Format only 2006 Dialog. All rights reserved.

12282371 PMID: 9885591
Small hepatocellular carcinoma: relationship of signal intensity to histopathologic findings and metal content of the tumor and surrounding hepatic parenchyma

Ebara M, Fukuda E, Kojima Y, Morimoto N, Yoshikawa M, Sugai M, Matsumoto T, Suzuki H.
First Department of Medicine, Chiba University School of Medicine
Radiology (UNITED STATES) Jan 1999; 210 (1):p83-8, ISN Code: 0401260
Publishing Mode Print, Comment in Radiology 2009 Jan;214(1)3
Document type: Journal Article
Language: ENGLISH
Main Citation Owner: NLM
Record type: MEDLINE Completed

Abstract

PURPOSE: To evaluate the relationship between the signal content of hepatocellular carcinoma (HCC) and the

DialogClassic Web: Quick Reference Guide

Links to fulltext reports from Investext®, NTIS and D&B® are available to all DialogClassic Web users.

The screenshot displays three report entries with callout boxes indicating link locations:

- Investext Report Link:** Points to the 'INVESTEXT(tm) Report Number: 11860177 Pages: 5' field in the first entry.
- D&B Report Link:** Points to the 'Dialog eLink: D&B Reports' field in the second entry.
- NTIS Report Link:** Points to the 'Dialog eLink: Check for PDF Download Availability and Purchase' field in the third entry.

Report 1 (Investext):
 06397678
 APPLE COMPUTER, INC.
 PRUDENTIAL EQUITY GROUP, INC.
 TORTORA, J.
 Date: December 29, 2006
 Record Type: CONTENTS
 INVESTEXT(tm) Report Number: 11860177 Pages: 5
 Cost: \$9.60 per page Full Report \$48.00
 This is a(n) Original PDF Company Report. To view PDF reports (available free from Adobe) installed on your computer.

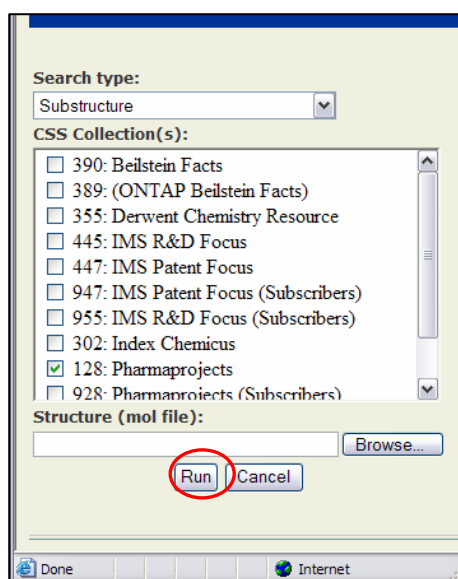
Report 2 (D&B):
 Dialog eLink: D&B Reports
 1/9/1
 DIALOG(R)File 516: D & B - DUNS MARKET IDENTIFIERS
 (c) 2006 D&B. All rights reserved.
 03199632
 Apple Computer, Inc.
 Apple
 1 Infinite Loop
 Cupertino, CA 95014-2084
 Telephone: 408-996-1010
 County: SANTA CLARA MSA: 7400 (San Jose, CA)
 Region: Pacific
 Business: Mfg Personal Computers and Peripheral Products Operating System and Application Computer Software

Report 3 (NTIS):
 Dialog eLink: Check for PDF Download Availability and Purchase
 2/9/3
 DIALOG(R)File 6: NTIS
 (c) 2007 NTIS, Intl Copyright All Rights Res. All rights reserved.
 2336039 NTIS Accession Number: PB2006-102374/XAB
 Analysis of the Elmira-Corning, New York Housing Market As of October 1, 2002
 Department of Housing and Urban Development, Washington, DC. Office of Policy Development and Research
 Corporate Source Codes: 007620031
 Oct 2002 18p
 Language: English
 Journal Announcement: USGRDR0606
 Product reproduced from digital image. Order this product from NTIS by phone at 1-800-553-NTIS (U.S. customers); (703)605-6000 (other countries); fax at (703)605-6900; and email at orders@ntis.gov. NTIS is located at 5285 Port Royal Road, Springfield, VA, 22161, USA.
 NTIS Prices: PC A03/MF A01
 Country of Publication: United States
 This analysis has been prepared for the assistance and guidance of the U.S. Department of Housing and Urban Development (HUD) in its operations. The factual information, findings, and conclusions may also be useful to build

Chemical Structure Searching

DialogClassic Web now allows you to use a chemical structure as a search term in databases that include chemical structure images. If you have .MOL files, a chemical structure search can be executed using the CSS Command.

- BEGIN a chemical structure search in a database that includes chemical structure images by typing CSS.
- Define search type by restricting your search to an exact match or finding larger structures that include the structure you entered.
- Check the database from the CSS Collection that you want to search. These databases contain chemical structure images.
- Select the .MOL file and click Run to execute the search.

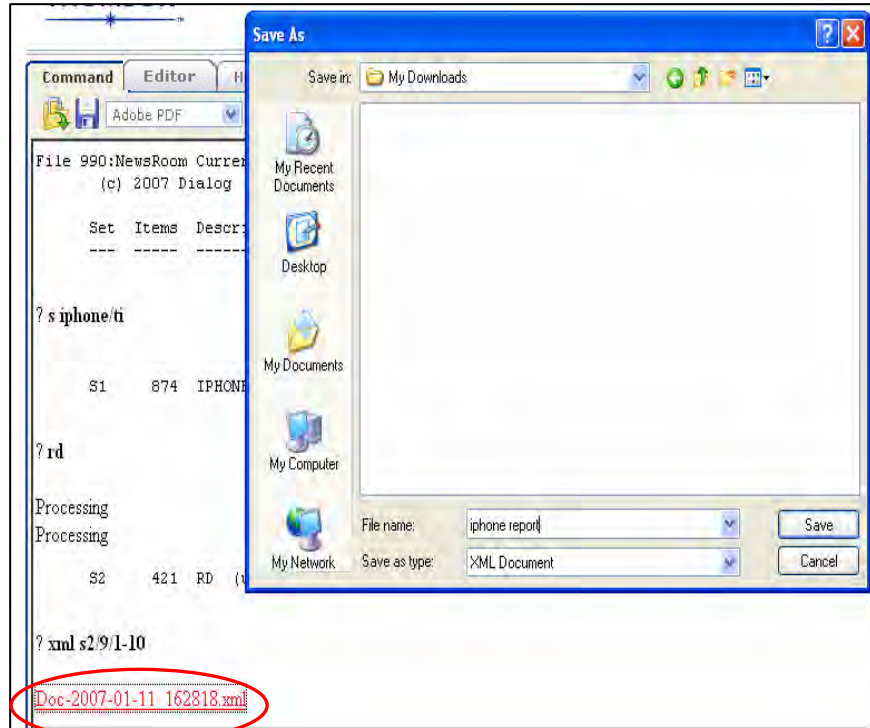


DialogClassic Web: Quick Reference Guide

Output Options

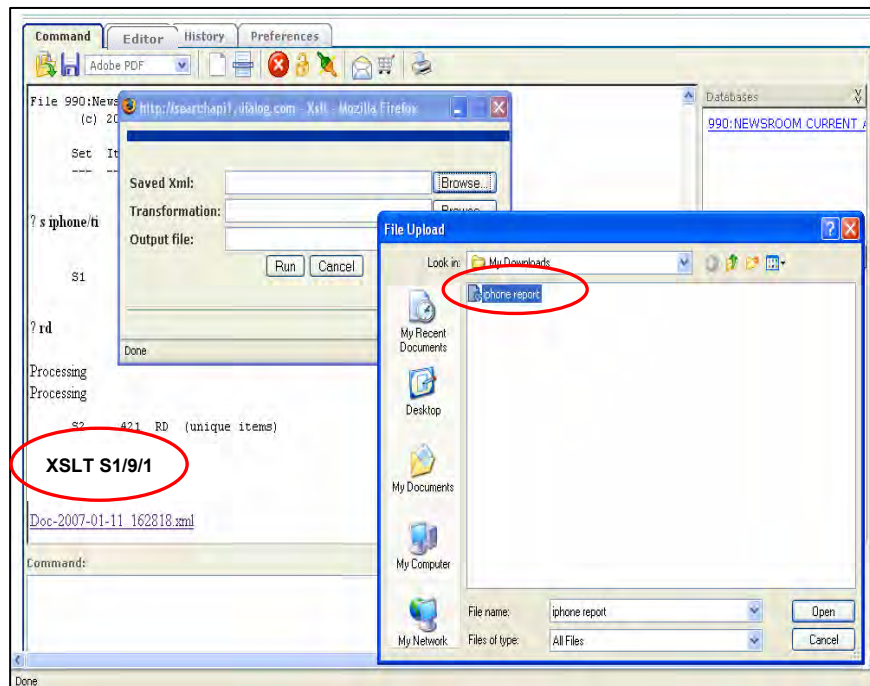
Output options in DialogClassic Web now include: **HTML, Microsoft® Word, Adobe® Acrobat PDF and TEXT**. You can also save output as an **XML** file.

- Conduct a search and enter the XML output command (e.g., XML S#/format/range of records) to display records.
- Click the link that displays the output in XML format.



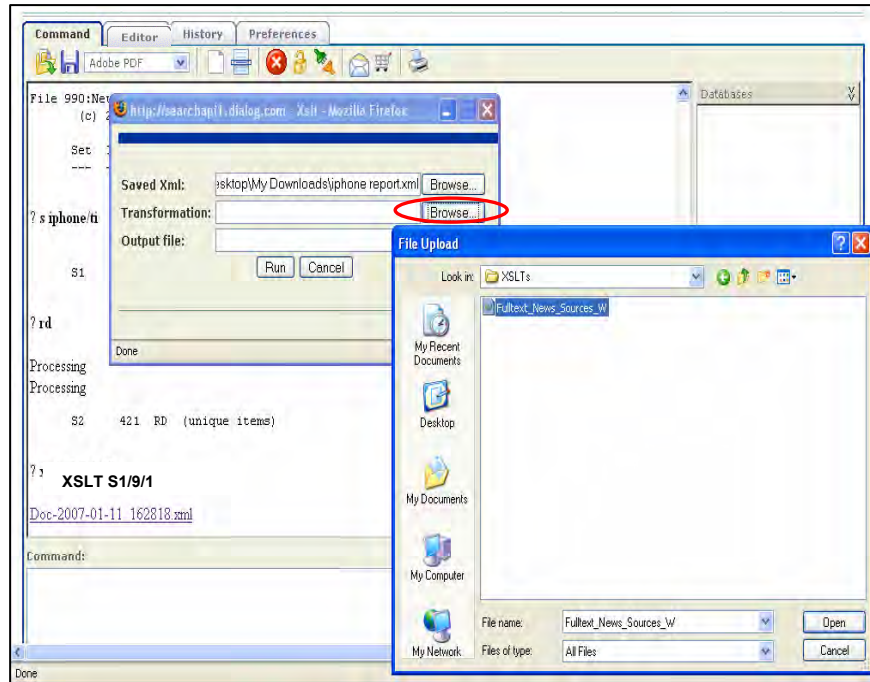
To convert Dialog XML into another format (Word, Excel, etc.), you can use the **XSLT Command**. This command will bring up a form that allows you to choose the XML file you downloaded from Dialog, the XSLT (Report Template or "Transformation" file) that will convert the XML, and the name of the file you want to create.

- Enter the XSLT command and a window displays.
- Click the Browse button next to the Saved XML box. Click the saved XML file and click Open.
- The file name will automatically display in the Saved XML box.



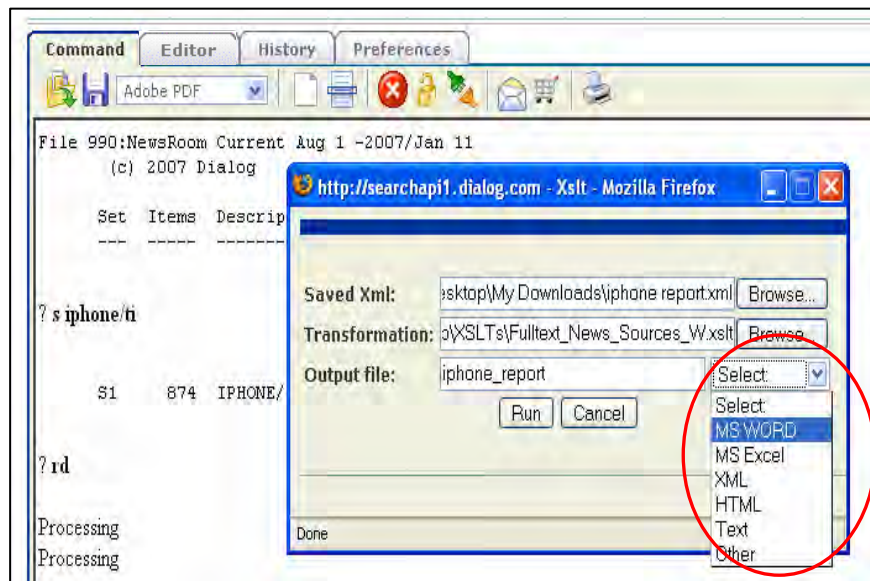
DialogClassic Web: Quick Reference Guide

- Click the Browse button next to the Transformation box and select the XSLT file from the window that displays. Click Open.
- The XSLT file name will display in the Transformation box.



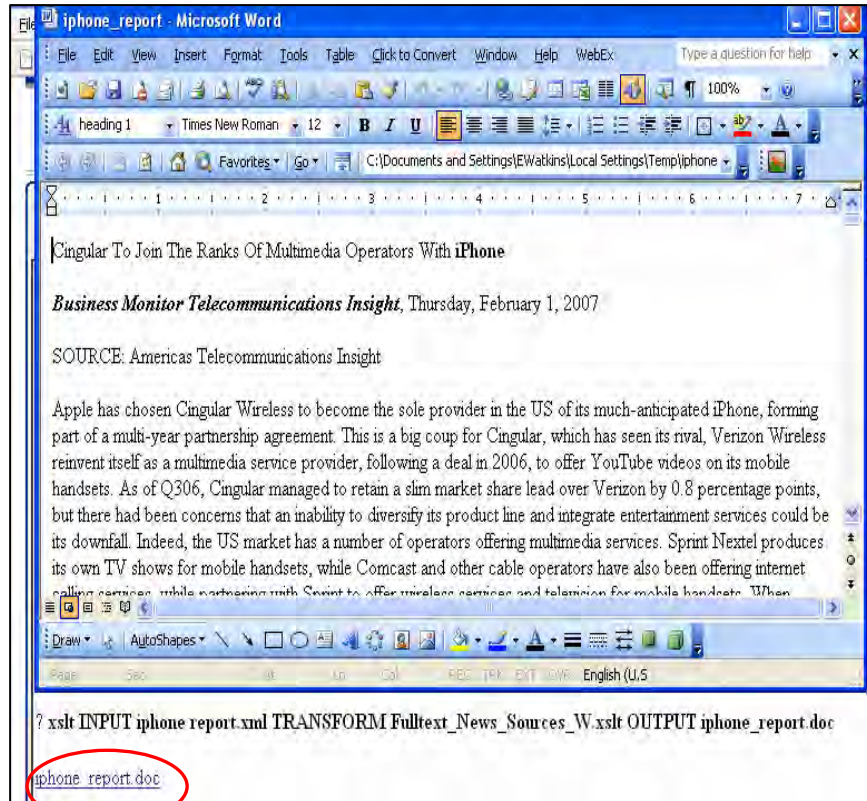
The XSLT, or “Transformation” Report Template, contains instructions for how to convert Dialog XML data into Microsoft Word or Excel format. The Transformation files may be downloaded to your computer from the Dialog support site at support.dialog.com/dialoglink/templates.

- Name your report and choose the appropriate file type.
- Click the Run button to perform the transformation.



DialogClassic Web: Quick Reference Guide

- A file is created and a link displays at the bottom of the document.
- Click the link to see the displayed report.



Customer Service & Support

Within North America: 1 (800) 3 DIALOG (334 2564)

Outside North America: +00 800 33 34 2564

E-mail: customer@aaaf*.com

Online Support: support.dialog.com

CM50081a-07

© 2007 Dialog. All designated trademarks are property of Dialog or its subsidiaries. Registered trademarks are registered by Dialog or its subsidiaries, U.S. Patent and Trademark Office. All other marks are trademarks or registered trademarks of their respective owners.