

October 2008



Trademarks from China Enhance the Dialog Trademark Collection

TRADEMARKSCAN®— CHINA (File 651) joins the robust collection of trademark databases on Dialog. File 651 contains over 4.5 million records and 2.6 million images covering information about unpublished and published trademark applications and registrations with SIPO (State Intellectual Property Office for the People's Republic of China) from 1950 forward, as published in Shangbiao Gonggao, the *China Trademark Gazette*.

File 651 follows the design of existing trademark files on Dialog. Trademark names are transliterated, and current status and goods and services are in English. The Trademark Cross Reference (XT=) provides either the common or the English name of the mark, where available, such as "tsingtao" for the mark "tsingtao qingdao pijiu," or "golden chicken" for the mark "jinji." Goods and Services are subclass descriptions and may not accurately reflect the exact goods. Inactive trademarks for the last three years are retained. Images represent the original graphical filing and are primarily in black-and-white with some in colors. The file updates weekly.

For additional information about TRADEMARKSCAN—China, see the [Bluesheet](#) or HELP NEWS 651.

What's New with Dialog: Customer Training and Documentation

So many new things are happening at Dialog, and training and documentation improvements are no exception. A series of Update meetings were held in September and early October to inform you about new directions at Dialog, as well as to provide training sessions by Dialog experts. Additionally, documentation is being updated to reflect new features of Dialog products and other enhancements. Plans for training include: a mix of regional sessions with Dialog experts; instructor-led "short courses" via the web; and courses you can take at your own pace in your own time.

We are committed to continuing to provide you with the excellent training you have come to expect from Dialog, as well as to employing new technologies to bring you training in formats that best meet your search and learning needs.

New Database Selection Guides for Searching Dialog and DataStar

Two new publications—the *Dialog® Database Selection Guide* and the *DataStar® Database Selection Guide*—will help you to select appropriate databases for your searches. The Guides contain a listing of DIALINDEX®/OneSearch® categories and CROS categories respectively. In addition, step-by-step examples illustrate how to search DIALINDEX and use CROS on DataStarWeb. Download these valuable Guides in PDF format from the Dialog website today!

(continued)

Contents

[Trademarks from China Enhance the Dialog Trademark Collection](#)

[What's New with Dialog: Customer Training and Documentation](#)

[Sci-Tech Content Updates](#)

[Business & News Content Updates](#)

[Intellectual Property Content Updates](#)

[DataStar Updates](#)

[Highlight](#)

[Announcements](#)

[Search Techniques: Dialog](#)

[Search Techniques: DataStar](#)

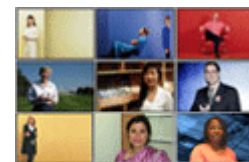
Highlight

Nominate a Quantum² InfoStar

Do you know an InfoStar?

Do you know an information professional who leads the way for others in his or her field? A dynamic individual who takes the initiative to solve problems and create opportunities either for his or her organization or professional association? We refer to these exceptional information professionals as InfoStars.

(continued...>)



[InfoStar Gallery ▶](#)

What's New with Dialog (continued from page 1)

Sign up now for the new quarterly *Training Newsletter* and the monthly *Chronolog*[®] to stay informed of new training courses, search tips, expert insights and more.

Sci-Tech Content Updates

Ei Compendex Reload on Dialog Adds Indexing and Display Tag Changes

Ei Compendex[®] ([File 8,278,288,988](#)) covers 190 engineering disciplines and is an indispensable tool for professionals, faculty and students. With over 10 million records from more than 5,600 scholarly journals, trade magazines and conference proceedings, Compendex is the most comprehensive interdisciplinary literature database available to engineers. In the 2008 reload, several new indexes and other enhancements were added to Compendex.

- A new issue title field is included in the /TI, Title index and display tag (TI). This field contains the issue title of the journal, book, conference proceeding or report ("source") in which the document was published.

The corresponding author (AU=), a phrase-indexed field, is included as a separate subfield at the beginning of the word-indexed affiliation field (CS=). The author email address is also included as a display code. Several new search and display fields have been added including publication date (PD=,PD), publisher (PU=,PU), and record type for abstract and citation (RT=,RT), among others.

To review all field changes, check the [Bluesheet](#). To view changes for Compendex (COMP) on DataStar, reloaded in August, see the [Datasheet](#).

Business & News Content Updates

McGraw-Hill Provides Comprehensive News and Financial Coverage

Did you know that you can get editorial coverage from **McGraw-Hill Companies Publications Online** ([File 624](#)) on just about any topic that affects business? Just enter your search terms on a recent hot topic and you will find the subject covered in a wide variety of McGraw-Hill's leading magazines and newsletters.

Your search combines *BusinessWeek's* domestic and international coverage of vital business news and analyses about companies, investing, the economy, technology, innovation, management, small business and more, with vertical industry coverage of topics like those published by McGraw-Hill's Aviation Week, Construction, and Platts Energy publishing groups. You benefit from searching across more than 55 McGraw-Hill publications, giving you comprehensive coverage on the same topic, covered from a variety of industry perspectives.

For an example of *BusinessWeek's* "horizontal" coverage of the business world and the vertical industry coverage of the other McGraw-Hill

(continued)

Highlight [cont'd]

What is an InfoStar?

InfoStars are information professionals who are outstanding examples of leadership and creativity in developing and promoting library and information services within their organizations, and who could serve as role models for others.

For more about the qualities of an InfoStar, read "[What Makes Someone an InfoStar?](#)"

Nominate your colleagues for an InfoStar Award today

Dialog is now accepting nominations for our Quantum² InfoStar Award honorees, who will be announced in December during Online Information 2008 in London. You are invited and encouraged to submit nominations. Simply use the online [nomination form](#) to provide a brief note about the nominee's leadership qualities and/or achievements. Nomination submission deadline is **Friday, October 31**. We look forward to receiving your nominations and thank you for your help in making this a successful program for 2008!

To view profiles of previous InfoStars, please visit the [InfoStar Gallery](#).

Business & News Content Updates (continued from page 2)

publications in File 624, we can look at results from the search query "credit()crunch." This search strategy finds stories from *BusinessWeek* magazine, as well as BusinessWeek Online (web-only stories), *Power Markets Week*, *Engineering News-Record*, *Platts International Coal Report*, *The Weekly of Business Aviation*, *Energy Economist*, *Platts International Petrochemical Report*, *Aerospace Daily & Defense Report*, *Business & Commercial Aviation*, *Megawatt Daily*, *Energy Trader*, *Platts Oilgram News*, and many more McGraw-Hill publications. For one topic, you get a range of editorial perspectives all from one comprehensive database of McGraw-Hill publications, some archived as far back as 1975.

Intellectual Property Content Updates

A Proximal and a Distal Point

by Ron Kaminecki, MS, JD

Welcome to the revitalized *Chronolog*. Back when the publication was printed on paper, I recall reading each edition, and I always learned something new. I have been asked to contribute a periodic column on intellectual property to replace the old IP e-newsletter. I'll be looking for feedback directly from you and would love to address some of the questions that I am presented with over time. I do sterilize the items to protect the innocent.

Two questions I receive often are "why are there two U.S. patent files and which is the best one to search?" The answer is not a simple one, as each has features that the other doesn't. For example, the **U.S. Patents Fulltext** database ([File 654](#)) comes to us from the U.S. Patent and Trademark Office (USPTO) and has the complete patent. **CLAIMS®/U.S. Patents** ([File 340](#)) comes to us from the folks at IFI CLAIMS after they add a lot of data not found in the original text. A portion of the information IFI CLAIMS provides in CLAIMS®/Current Patent Legal Status ([File 123](#)), especially reassignment data, is also put into File 654, although it is slightly delayed. True, the IFI CLAIMS file does not have the fulltext; it does, however, feature at least the front page information and the claims, and does have coverage of chemical patents back to 1950. This file has been enhanced with:

- Additional enhanced titles
- Standardized assignee names and assignee numbers
- 96,000 recovered chemical patents from 1971-1973 not covered by other files
- Reclassified U.S. class codes to reflect the most recent coding, including the re-indexing of all U.S. patents back to 1950 with the latest (8th edition) International Patent Classification Codes
- Post-issuance information including reassignments, reexaminations, disclaimers, and extensions
- Merged published applications with issued patents, a real convenience, with various fields tagged with the A or B Kind code of the document from which they were originally derived
- Probable assignees, in which the folks at IFI CLAIMS have found almost 90 percent of all the eventual assignees. Published applications usually don't show an assignee, and the probable

(continued)

Announcements

Did you know... Training Schedule

The live web-based training schedule for the remainder of 2008 is now available. [Register](#) now for the sessions of your choice.



Experience
REAL-TIME training
with our leading
search specialists
straight from your desk,
at a time convenient
to you.

[REGISTER TODAY >](#)

Search Techniques

Search Tips for Dialog Updated Dialog Search Guide

The updated [Successful Searching with Dialog Command Language](#) provides detailed descriptions and examples of each command on Dialog. Links from the Table of Contents take you directly to each command. Check the KnowledgeBase database ([File 418](#)) for suggestions on [How to Use This Guide](#).

A Proximal and a Distal Point (continued from page 3)

assignee data added in File 340 can't be found in any other file on Dialog. (These are grouped under the patent assignee code PA= and also by themselves as PS=)

- An estimation of when the issued patent may expire under normal circumstances
- Additional indexing, especially for chemical information
- Special indexing of business method patents since 2001
- More features, including a nice chart of the “begats,” as in this application begat that divisional, which begat a continuation-in-part, etc.

Searchers report that if they are looking for a common term that could be misinterpreted they prefer the IFI CLAIMS file because the basic index covers the title, abstract and claims and not the entire specification where the common term could overload the retrieval with casual mentions of the search term. Thus, while the search may retrieve fewer hits, the retrieval tends to have a higher percentage of good hits versus bad—great for quickly locating a few pieces of prior art without having to wade through many extraneous hits.

I do hope to see you at the PIUG 2008 Northeast Conference post-conference meeting, “What’s Going on at Dialog: the Patent Searcher’s Edition” being held by Dialog from 9:00 to 11:00 a.m., Wednesday, October 15. Please register ahead of time and watch for a new series of Webex sessions covering all aspects of intellectual property from cradle to grave.

Finally, an interesting note on unrelated information and don’t ask me how I know. The word is PREGNANT with an R not an N, so if you ask someone about their pregrant publication, don’t be surprised if they give you a book about prenatal care.

Ron Kaminecki has worked with Dialog for nearly 30 years in various positions, including Regional Manager and Senior Staff Advisor. Ron has a bachelor of science degree in Chemistry; a master of science degree in Computer Science and Information Systems, and a juris doctorate degree with a Certificate in Patent Law. He is a registered U.S. patent attorney and a member of the Illinois Bar, and a 31-year member of the American Chemical Society.

DataStar Content Updates**PASCAL Reload Facilitates Cross-File Searching**

PASCAL (PASC), the international database from the French National Research Council on Life and Physical Sciences, has been reloaded on DataStar® with a number of enhancements.

- The document layout and search functionality in PASCAL is now similar to most other biomedical files on DataStar to enhance cross-file searching.
- Sources include the full and abbreviated journal names, ISSNs and publisher details.
- Author names include first names (where provided).

(continued)

Search Techniques**Search Tips for Dialog Searching Fulltext in McGraw-Hill (File 624)**

If you wish to narrow down the context of your search term within a story, try using the “same paragraph” (S) connector. When you are TYPing the fulltext in **File 624**, it’s useful to use “Key Word In Context” and set your “KWIC” window to 50 words.

PASCAL Reload (continued from page 4)

- New fields have been added, including original language title, conference information, corporate authors, and author keywords.

Additional information about PASCAL is available in the database [Datashet](#) and database guide in BASE (search as BASE-PASC).

PsycINFO Reload Provides Updated 2008 Thesaurus

PsycINFO® (PSYC), a key information resource for professionals and academics in all psychology and related disciplines, has been reloaded on DataStar. The file's archive has been re-indexed with current descriptor terms from the 2008 thesaurus while retaining current database structure and functionality.

Check the [Datashet](#) and database guide in BASE (search as BASE-PSYC) for information about the database's content and how to search it.

Search Techniques

Search Tip for DataStar: Natural Language Searching on DataStar

In DataStar command language, several options are available to search words that are next to each other:

- If the word is part of an index (e.g., controlled descriptors in MEDLINE®), connect the words with hyphens (e.g., DIABETES-MELLITUS).
- To retrieve controlled indexing and terms next to each other in the text, use the adjacency (ADJ) operator (e.g., DIABETES ADJ MELLITUS).
- On DataStarWeb only, you can enter words separated by spaces (e.g., DIABETES MELLITUS), and DataStarWeb automatically assumes the adjacency operator (ADJ). This occurs in Easy and Advanced Search modules.

Note: Hyphenated searching (e.g., DIABETES-MELLITUS) is available in both search modules; however, the adjacency operator (ADJ) is available in Advanced Search but not in Easy Search.

Contact Dialog

For more information: +1 800 334 2564 (inside North America)
or +00 800 33 34 2564 (outside North America)
www.dialog.com

Dialog, 11000 Regency Parkway, Suite 10, Cary, NC 27518 USA
Our telephone: +1.919.462.8600

Copyright (C) 2008 Dialog. All rights reserved.

Chronolog

Subscribe:
support.dialog.com/enewsletters/chronolog/subscribe

Chronolog Archives:
support.dialog.com/enewsletters/chronolog