

**3** Dialog1: The Power of Dialog Made Simple

**5** Enhancements to Alerts on DialogSelect and Dialog Intranet Toolkit

**6** Books in Print<sup>®</sup> on Dialog Reloaded and Current

**8** New Pricing Structure for Pharmaprojects

## Profound<sup>®</sup> Enhancements Bring Faster Searching, New Content, and Much More

If you are a user of Profound for the Internet, you will now benefit from accelerated search times, significant new company information, and Table of Contents pricing on ResearchLine, BrokerLine and CountryLine.

Profound for the Internet, for those users more familiar with the Windows<sup>®</sup>-based version, is now composed of two major database collections — WorldSearch and QuickSearch — as well as Briefings. The eight databases are listed below.

| <i>Profound WorldSearch</i> | <i>Profound QuickSearch</i> |
|-----------------------------|-----------------------------|
| ResearchLine                | Company Information         |
| NewsLine                    | Intellectual Property       |
| BrokerLine                  | Research & Development      |
| CountryLine                 | North American Newspapers   |

Both employ easy-to-use keyword search interfaces.

### Improved Search Time on WorldSearch

WorldSearch databases are now powered by a new AltaVista<sup>®</sup> search engine resulting in a considerable improvement in the search response times. This is particularly valuable when conducting complex searches and searches on Profound NewsLine (the largest WorldSearch database).

A counter at the top of the screen indicates that a search is in progress. The counter displays a cumulative count of the number of records found, working chronologically down through database segments until the requested number of records has been retrieved or the search is complete.

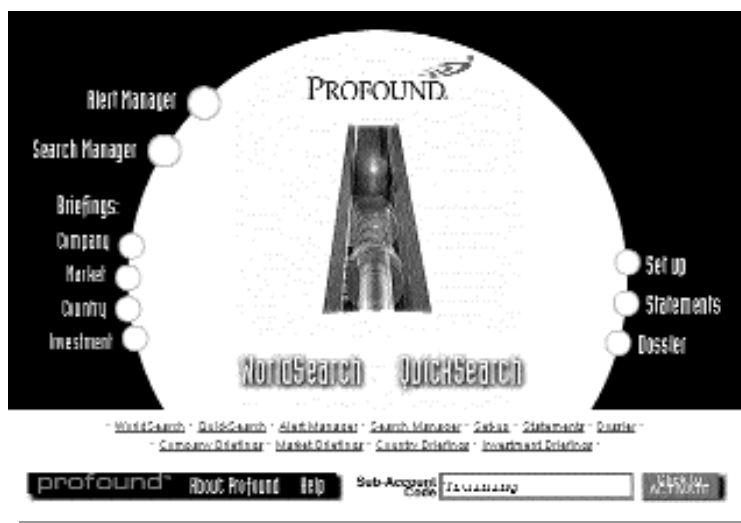


Figure 1: Profound Main Screen

### New Company Information on QuickSearch

A number of new company data sources has been added to QuickSearch. The new data will be of great interest if you require information on companies based outside the U.S., not available on QuickSearch until now.

*Continued on page 4*

## Table of Contents

|                        |   |
|------------------------|---|
| From the Editor        | 2 |
| Trade Shows            | 2 |
| Bluesheets/Datasheets  | 2 |
| Office Address Changes | 4 |

### What's New

|  |   |
|--|---|
| Profound® Enhancements Bring Faster Searching, New Content and Much More | 1 |
| Dialog1: The Power of Dialog Made Simple                                 | 3 |
| Enhancements to Alerts on DialogSelect™ and Dialog Intranet Toolkit      | 5 |
| RAPRA Now Released OnDisc  | 9 |
| Special Academic Discounts for Selected OnDisc Products                  | 9 |

### Content Update

|   |    |
|---|----|
| Books In Print® on Dialog Reloaded and Current  | 6  |
| Reuters Business Insight Reports Launched on DataStar                                   | 7  |
| In the Spotlight: SPORTDiscus Highlights Health and Wellness for the Office and at Home | 7  |
| New Pricing Structure for Pharmaprojects  | 8  |
| MEDLINE Update  | 8  |
| Kompass Product Classifications on DataStar Now Searchable in Five Languages            | 9  |
| DataStar Happy Hour on Foodline®: Current Food Legislation                              | 9  |
| Files Removed   | 9  |
| Harvard Review  | 11 |

### Training Update

|  |    |
|--|----|
| Search Solution  | 10 |
| Keeping Current with Dialog Alerts                             | 11 |
| Continuing Education Credit (CEU) Available for Dialog Courses | 12 |
| Training Schedule  | 12 |

## From the Editor

The April issue highlights new product releases, enhancements to existing products, and content additions. Product updates will be announced each quarter in the Chronolog. Enhancements to Profound on the Internet, changes to the Alerts feature in DialogSelect and the Dialog Intranet Toolkit, and the introduction of Dialog1, the new easy-to-use interface — all are designed to make Dialog products

meet the needs of all our users. In addition, other changes to our products are highlighted, such as enhancements and additions to the DataStar collection, and pricing changes, including academic pricing discounts for selected OnDisc products. Also, don't miss the Search Solution for tips on search techniques provided by subject experts from the U.S. Knowledge Center. This issue has something for everyone! ♦

## Dialog Bluesheets/DataStar Datasheets

This new or revised documentation is available in the Dialog Library at <http://library.dialog.com>. Users can also consult Dialog Bluesheets™ (File 415).

### File 470 Books in Print®

**File 500** Extel International Financial Cards from Primark

New or revised DataStar documentation is available at: <http://ds.datastarweb.com/datasheets>. Users can also consult the

DataStar file BASE—DataStar Database Guides.

**ADRD** Adis R&D Insight

**MCNF** Medicof: Medical Conferences and Events

**IPUR** IMSworld R&D Focus Drug Updates

**PHAR** Pharmaprojects

**BIOL** BIOSIS Previews®

**KPEU/KPWO** Kompass: Europe, Kompass Middle East, Africa, Asia-Pacific, Americas

## Trade Shows We will see you there!

April 30 - May 2 Santa Clara, CA  
**Extranet/Intranet 2001 Conference & Exhibition**

May 5-9 San Francisco, CA  
**International Trademark Association**

May 15-17 New York, NY  
**National Online Meeting**

May 29-31 Prague (Czech Republic)  
**INFORUM 2001**

# Chronolog®

The *Chronolog* (ISSN 0163-3732) is published by:

**The Dialog Corporation**  
11000 Regency Parkway, Suite 10  
Cary, North Carolina 27511 USA.

1.800.334.2564 or 1.919.462.8600  
Fax: 1.919.468.9890

Please address any comments or questions to [customer@dialog.com](mailto:customer@dialog.com).

DIALOG is a service mark of The Dialog Corporation registered with the U.S. Pat. & Trademark Office. Chronolog, DIALINDEX, DIALOG, DIALOG OnDisc, DialogLink, DIALORDER, First Release, OneSearch, ONTAP, and Profound are trademarks registered with the U.S. Pat. & Trademark Office. DataStar, DIALOG Headlines, DIALOG Homebase, DIALOGSelect, SourceOne, and SitePrints are service marks of The Dialog Corporation. All other brand and product names are trademarks or registered trademarks of their respective holders. The contents of this publication are not copyrighted and may be freely reproduced.

## Dialog1: The Power of Dialog Made Simple

**D**ialog1 is a suite of powerful and simple to use search forms that allows users to obtain relevant data from Dialog with just “one click” of the mouse. Anyone can use it. An attorney searching for a Japanese patent number, a scientist looking for drug data from a clinical trial, a business consultant checking on a competitor’s most recent acquisition, or anyone else who needs authoritative information to perform his or her job can find the answer on Dialog1. Information professionals and their clients within their organizations will welcome Dialog’s newest solution to their information needs.

### How Does It Work?

Developed with the help of librarians and information professionals, Dialog1 deploys powerful Dialog searches “behind the scenes.” Expert Dialog searchers have constructed these strategies based on the questions most frequently asked of Dialog Knowledge Center experts. There is no charge to access Dialog1, and most



Figure 1: Main Screen of Dialog1

of the searches provide free title lists. Customers only pay for the information they download. There are no DialUnits or connect time fees. Dialog1 is available at <http://www.dialog1.com> with your Dialog user number and password.

### Content Modules

Divided into research modules, Dialog1 uses a simple and intuitive “question and answer” format to connect customers to their answers, so their time can be spent working with information and not working to find the information. The modules that are currently available include Intellectual Property, Pharmaceuticals, Business Intelligence, World News, and Marketing. [See Figure 1 below]

- The **Intellectual Property module** gives customers easy access to full-text patents, patent families, patent citations, global trademarks, and U.S. copyrights. This module also provides the intellectual property researcher with some useful features unique to the industry, such as a Japanese patent finder. With Dialog1, patent searchers do not have to worry about Toroku, Kokoku, Kokai, Utility Models, Showa Era, or Heisei Era patents. Dialog1 will find all of the possible permutations of a Japanese patent number and provide a list of patent titles by searching across the Derwent World Patents Index, INPADOC, and JAPIO databases.

- The **Pharmaceutical module** enables customers to access patent information, industry news, research news, product

pipelines, company profiles, research literature, and regulatory information. By using the Pharmaceutical module, users can follow the products that their competitors are developing and where those products are in the development cycle. For example, if a chemist wanted



Figure 2: Pharmaceutical Search Form  
To find clinical research literature on Zyprexa, just place the drug name in the “drug name” field and click the search button. As always, you can search on generic names and lab codes as well.

to track the products being developed by Eli Lilly but only in the earliest phases (pre-registration and pre-clinical), Dialog1 enables him or her to conduct this search. An “Advanced” search can be performed just by entering a drug name. Dialog1 does the search using Dialog’s powerful indexing and unique search features to obtain results which are then sorted by date with duplicate records removed. See the example search form in Figure 2.

- The **World News module**, divided into geographic areas, provides access to news sources throughout the world. For example, just by clicking Japan on the world map, users are linked to the Asia, Pacific Rim, and Australia search form. Content is drawn from leading news sources like Agence France-Presse,

Continued on page 6

*Profound Enhancements — Continued from page 1*

New databases include:

- **D&B—Dun's Market Identifiers®** contains directory listings, sales volume, and marketing data for over 18 million establishments in nearly 200 countries worldwide. D&B Canadian Dun's Market Identifiers is also newly offered whilst Market Identifiers for the U.S. has been available previously.
- **Teikoku Databank** (Japan) provides the latest information on approximately 240,000 Japanese companies. Full and condensed Balance Sheets and Income Statements are available for about 130,000 companies.
- **ICC British Company Financial Datasheets** (U.K.) provides analysis on the latest financial data of all companies with limited liability in the U.K., including "large," "medium," and "small," quoted and non-quoted public and private companies from all sectors of U.K. industry and commerce.
- **Kompass** comprises a range of databases providing information on numerous companies in all regions outside the U.S. Kompass has an emphasis on manufacturing, industrial, and associated service sectors with product names displayable and searchable. The Thomas Register Online®, giving similar coverage for companies in North America, is already available on QuickSearch.
- **Investext®** includes the full series of Investext PDF reports for the first time on QuickSearch. Investext analyst reports cover financial forecasts, market share, competitive analysis, industry trends, and more.

In addition, the EdgarPlus™ database from Disclosure will now be available on QuickSearch with Extel from Primark coming in the future.

Company information on QuickSearch has been rearranged with the introduction of new data and the division of existing U.S. data into new sets. Note there is no change to menus for the other three data-

base collections on QuickSearch (Intellectual Property, R&D, North American Newspapers). For more information about company information on QuickSearch, see the online version of the April *Chronolog* at <http://library.dialog.com/chron>.

### Removal of CompanyLine and WireLine From WorldSearch

With the additional company-related information that has been added to QuickSearch, CompanyLine has been removed. This is intended to avoid unnecessary duplication of data bringing greater focus to company-related information on Profound.

In the same way WireLine — the WorldSearch database providing news reported on over twenty-five news wires — has also been removed from WorldSearch. All the news wire sources are now being loaded onto Profound NewsLine, the main WorldSearch news database, meaning you can search all news sources (wires and published) simultaneously.

### Section Prices Viewable in Table of Contents on Profound for the Internet

In response to requests from customers, Profound for the Internet now presents a price alongside each separately available section of a report, giving you better control of your spending. [See Figure 2.] This applies to reports in ResearchLine, BrokerLine, and CountryLine. (NewsLine reports do not have Tables of Contents). This feature will be particularly valuable if you are an information professional because it enables you to provide accurate cost estimates in advance for work you undertake for your clients

Figure 2: Table of Contents with Prices Listed

| Sections/Tables                                    | Page |
|--|------|
| Table/Chart: Stock Price & Earnings Data 1999-2002 | 1    |
| Summary  | 1    |
| Highlights   | 1    |
| Table/Chart: Earnings: 2001                        | 2    |
| Analysis   | 2    |
| Disclosure   | 2    |

or colleagues.

### Moving to Profound for the Internet

The new enhancements outlined above have removed many of the key obstacles identified by users of Profound for Windows® for not migrating to the Internet-based version of the product. For example, with the AltaVista® search engine, Profound for the Internet now matches the Windows-based product for search speed. Similarly, Table of Contents pricing for sections of reports—long regarded as a great strength of the Windows-based product—is now available on Profound for the Internet.

Your user name and password are valid on both versions of the Profound product. So be sure to test the latest enhancements at <http://www.profound.com> or

## Office Address Changes

The Chicago office of Dialog has moved to a new location:

Dialog Corporation  
180 North LaSalle, Suite 2930  
Chicago, IL 60601  
Main Number: 312-726-9206  
Fax Number: 312-726-3550

Dialog Sweden has changed its location to central Stockholm:

The Dialog Corporation Sweden AB  
PO Box 6430  
SE-113 82 Stockholm  
SWEDEN  
Phone: +46 (0)8 587 671 30  
Fax: +46 (0)8 587 671 92 ◆

## Enhancements to Alerts on DialogSelect™ and Dialog Intranet Toolkit

Dialog will release enhancements to the Alerts function on DialogSelect™ and Dialog Intranet Toolkit that will enable users to have more specialized delivery of their Alerts at no extra charge. This release offers enhancements for both domain access users (those users who are accessing Dialog through one user number in an organization) and regular Alert users in two main areas: (1) delivering Alerts and (2) managing Alerts.

### Delivering Alerts

In the past when using DialogSelect and Intranet Toolkit, a single email address was the only address option for delivery of all alerts for a user number. This was a particular problem for domain access accounts where there is a single user number for the entire organization. With the new release, users can now set up Alerts and have the results delivered to email destinations of their own choosing — either theirs or alternate addresses. The result is a more direct delivery of the latest information.

Here's how it works. When you create a new Alert, a drop down list of email addresses stored under your user number displays. Simply enter a name for the Alert and select the email address for delivery (See Figure 1).

Figure 1

To set up a new email address, click CREATE NEW ADDRESS. For domain users, the “Email Address” is a blank input box, unless the user has created an Alert or managed Alerts previously during the session. When CREATE ALERT is clicked, the system checks to see if the email address has been used before. If not, you are prompted for information, such as email software and name (See Figure 2).

Figure 2

### Managing Alerts

Another new enhancement lets customers manage the Alerts stored under the different email addresses and easily make changes to the email address profiles.

For domain customers, this means that individual users can manage their Alerts by signing in with their email address via the “Manage Alerts” link on the Help page. In addition, account administrators can control *all* Alerts through a password-protected Alerts administrator site. From the regular Alerts sign in page, the administrator just clicks the link to display the Administrator Sign In page. After signing in, all email addresses for the user number are listed on the new “Manage Alerts: All Email Addresses” page (See Figure 3).

Regular customers just click the “Manage Alerts” link on the Help page to display the “Manage Alerts: All Email Addresses” page, which lists all email addresses for that user number.

Figure 3

Using these two new enhancements to the Alerts function on DialogSelect and Dialog Intranet Toolkit allows you to set up, modify, and delete Alerts quickly and easily. You now have the flexibility on one Dialog user number to set up and send Alerts to any and all addresses you wish. Don't delay — set up your Alerts today.

For more information about setting up Alerts, please contact your local Help Desk: Knowledge Center (U.S.) at 1-800-3-DIALOG (1-800-334-3564) or U.K. at 44-171-930-6900. A workbook entitled *Creating and Using Alerts*, which demonstrates how to set up Alerts, is available at the Training Center web site at: [http://training.dialog.com/sem\\_info/courses](http://training.dialog.com/sem_info/courses). ♦

*Dialog1* — Continued from page 3

AP News, Asia Pacific News, World Reporter, Xinhua News, and more.

- The **Business Intelligence module** allows customers to access company profiles, financial information, market share, investment research, joint ventures, and industry trends, to name a few. It is divided into four sections: company, product, industry, and financial information. The remote link service to PDF reports from Investext is also available in Dialog1, giving users access to this leading investment research source.

- The **Marketing module** takes advantage of Dialog's marketing-specific content, such as trade publications like *Advertising Age*, *Adweek*, and *Brandweek*. It then couples this slice of content with business and industry information creating a unique solution for marketing professionals.

More modules are coming soon, such as Energy, Biotechnology, and Engineering.

#### **Additional Features**

- Buttons for "Cost" and "Search Again" enable the user to view the cost of

records or edit a search strategy.

- The "Sources" button, located at the top of the navigation bar throughout the product, provides access to Search Forms, Databases Used during a search, and Search Limiters, the "behind the scenes" strategy.
- "Alert Request" gives the searcher access to Alerts set-up help.

Dialog1 offers high-level content with an easy-to-use interface. If you have a Dialog account, you can begin using Dialog1 today. If not, please contact [dialog1\\_help@dialog.com](mailto:dialog1_help@dialog.com) or visit our web site at [www.dialog1.com](http://www.dialog1.com). ♦

## **Books In Print® on Dialog: Reloaded and Current**

**A**s of March 2001, Books In Print (File 470) on Dialog is current and has returned to monthly updates with the February 2001 update. There are now almost 3 million records in the file with details of print status, bibliographic information, publisher data, and awards granted to each title. Also, with the reload of the file, the Dialog MAP feature is once again working with File 450: Publishers, Distributors, and Wholesalers. Both databases are produced by R.R. Bowker, a division of Reed Elsevier Inc. Use RN to MAP the Bowker Publisher Identification Number in either file.

The Books In Print database is a major source of information for all books published or distributed in the United States that are available to the general public or trade for single or multiple copy purchase. The database includes scholarly, popular, technical, law, medical, adult, juvenile, reprint, and all other types of books covering all subjects. Records typically include title, author, ISBN, status, series name (if any), publisher, pagination, binding, intellectual and grade level, and hard copy source. Records may also include multiple ISBN entries for books that are published in multiple formats. Extensive subject classification is also

provided through Bowker Subject Headings and other descriptor lists.

With the reload, there is a new field to indicate Awards (AW=) presented to the book, including Newbery, Caldecott, and Pulitzer awards. EXPAND the AW=index to see the full scope of the awards.

#### **MAP**

Use Books in Print (Dialog File 470) to track down the publisher of a book. Then use the MAP feature to search File 450 to find publisher information, to get their toll-free number, and to check what discount schedules they may offer. File 450 is a directory database of the entire U.S. book and electronic publishing industry. It provides company and contact details of publishers' imprints and subsidiaries and divisions, as well as details of wholesalers and distributors of their titles. The file contains address and ordering information, including discount scheduling. You may also begin your search in File 450 if you know the publisher name and wish to find a list of titles for that publisher in File 470. To view a sample search using the MAP command, see the online version of the April *Chronolog* at <http://library.dialog.com/chron>.

#### **ALERTS**

Alerts for File 470, Books In Print, will begin running again with the February 2001 update. If you wish to view records in your search query that have been added to the database during the year 2000 (which covers most of the time the database was not updating), you may use the RS= index (Date of record in file). Use `SELECT RS=2000?` to retrieve all records added to the file during the year 2000. There are 344,800 records that are retrieved with this RS search. Please be sure to EXECUTE your Alert and then AND your final set with `RS=2000?`. To view a search example on how to retrieve records added to File 470 in the year 2000, see the online version of the April *Chronolog* at <http://library.dialog.com/chron>.

For more information on either File 470 or File 450, contact R.R. Bowker at 800-323-3288 or 908-464-6800. A revised Bluesheet for File 470 is included with the April *Chronolog*. Please annotate your Bluesheet for File 450 to reflect that the MAP code is now RN instead of PU. You may also find both corrected bluesheets in Dialog Bluesheets™ (File 415) and on the Dialog website (<http://library.dialog.com/bluesheets/>). ♦

## In the Spotlight

### *SPORTDiscus Highlights Health and Wellness for the Office and at Home*

If you have always thought of SPORTDiscus as a database for the sports-minded only, you are in for a pleasant surprise. Dialog File 48 and DataStar file SPOR provide articles related to stress, mental training, fitness, goal setting, visualization, coaching, training, and nutrition, all familiar terms in the business environment. The subjects listed are not restricted to the world of sport. On the contrary, all of these areas are being used as research benchmarks in corporate wellness and healthy lifestyles.

This bibliographic database with over 500,000 references is easily searchable; and all of the references from book chapters, journals, and periodicals are pre-qualified by the Sport Information Resource Centre (SIRC) indexing advisory board. Each reference is given a research level: B = Basic; I = Intermediate; and A = Advanced. With indexing partners from the United States,

the United Kingdom, France, Spain, Australia, Sweden, China and Israel to name a few, this database of fitness, medicine, and training is truly a global resource.

In addition, the fulltext of over 75% of the SPORTDiscus references is available from Dialog through DialOrder®.

#### Content Coverage

SPORTDiscus provides full coverage of many topics, such as psychology and mental training, employee fitness programs, and nutrition and ergogenic aids. These complement information obtained from other databases on Dialog and DataStar, such as MEDLINE®, ERIC, PsychINFO®, EMBASE®, and ABI/INFORM®. The following table shows the number of records in SPORTDiscus on these subjects.

|                            | Number of Records |
|----------------------------|-------------------|
| Psychology/Mental Training | 8,436             |

|                              |        |
|------------------------------|--------|
| Employee Fitness Programs    | 1,459  |
| Nutrition and Ergogenic Aids | 12,511 |

Whether you are directing a business information resource center, working as a human resources professional, or administering an employee assistance program, the breadth of references will offer hubs of knowledge that can be used in research.

#### Thesaurus Available

Finally, users of SPORTDiscus will have the benefit of the SIRC Thesaurus when using the database. Its hierarchical and extensive cross-reference structure, with an estimated 12,000 descriptors, has made this thesaurus the industry standard used by all of our indexing partners around the world.

For more information about SPORTDiscus, please refer to the Bluesheet for Dialog File 48 (<http://library.dialog.com/bluesheets>) or the Datasheet for DataStar, File SPOR (<http://ds.datastarweb.com/datasheets/>). ♦

## Reuters Business Insight Reports Launched on DataStar

**B**usiness Insight Reports (RBIR) on DataStar/File 759 on Dialog, produced by Reuters Business Insight, a world-leading information provider, was launched on DataStar in March 2001. RBIR provides detailed, up-to-date analysis and forecasts for the following seven key growth areas:

- Ecommerce
- Consumer goods
- Energy
- Financial services
- Healthcare
- Technology
- Human resources

The database will be updated monthly and coverage is global. The connect per hour charge is CHF87.00 / US\$60.00 and CHF27.60 / US\$19.04 per text paragraph.

#### Search Features

Reports can be purchased by the section. To view the Table of Contents, use the print command: ..P TI TC 1. Each section displays, along with the corresponding paragraph.

|   |   |         |
|---|---|---------|
| Title: B2B on the Internet: 2000-2005:THE BUSINESS PROCESSES. |   |         |
| TC  | 4.0 THE BUSINESS PROCESSES                    | TX (1)  |
|   | 4.1 THE THREE CORE BUSINESS PROCESSES         | TX (2)  |
|   | 4.2 DYNAMICWEB ENTERPRISES                    | TX (3)  |
|   | 4.3 ST.PAUL SOFTWARE                          | TX (4)  |
|   | 4.4 SELECTED DISTRIBUTION MANAGEMENT PROFILES | TX (5)  |
|   | Selected online procurement providers         | TX (6). |

To view the required section, use the command: ..P TX(2) 1.

The complete database search guide is available in BASE; search BASE-RBIR. The online datasheet can be found at <http://ds.datastarweb.com/datasheets>. ♦

## New Pricing Structure for Pharmaprojects

In 1999, Pharmaprojects saw the introduction of a host of additional features, which included the origin of material, indication, and route of administration. During 2000, Pharmaprojects focused on improving the timeliness of the data.

Following these enhancements and some detailed analysis of the drug pipeline information market, the decision was taken to realign the pricing structure with other R&D database providers and to return to a subscriber/non-subscriber model. Subscribers are defined as Dialog or DataStar customers who buy Pharmaprojects at their site directly from PJB Publications in either hardcopy or electronic form.

### Pricing Changes

From April 1, 2001, the following pricing structure applies to Dialog and DataStar:

- Price per record for non-subscribers  
\$12/SFr 17.40
- Price per record for subscribers  
\$6.30/SFr 9.13

Dialog DialUnits have dropped for both subscribers and non-subscribers from \$24.60 to \$24. Connect hour prices remain unchanged at SFr 4.62 for DataStar.

Pharmaprojects users who hold Alerts on Dialog and DataStar and are non-subscribers should be aware that the price per record

has also risen to \$12/SFr 17.40. Rates for subscribers are at \$6.30/SFr 9.13. Alert profile prices on both systems remain unchanged.

The changes have been communicated to customers through online banners and help messages and by letter to non-subscribers.

### Password Coding on Dialog

Dialog and PJB Publications have worked together over the last few weeks to ensure that all users of Pharmaprojects are correctly coded as subscribers or non-subscribers.

File 128 is the non-subscriber file; File 928 is the subscriber file. If access is denied when you enter 928 (“928 is unauthorized”), your USERID has not been coded for subscription status. If you know that you are not a subscriber, switch to File 128.

**IMPORTANT:** If you are a subscriber, you must use File 928 to benefit from the discounted rate. If you use File 128, you will be charged at the higher, non-subscriber rate.

### Password Coding on DataStar

The file labels for subscribers and non-subscribers remain PHAR, PHDI, and PHLP. However, when you access these

files as a non-subscriber, the following message appears on your screen:

Your Userid is not validated for the PHAR/PHDI/PHLP subscription rate. Type ..PRICE to check current prices.

If you are a non-subscriber, accept the message and carry on searching. You will be charged at the non-subscriber rate.

If you think you should be coded as a subscriber, contact your nearest Dialog or DataStar Customer Services Desk or Hayley Spendlove from RJB (Hayley.Spendlove@pjbpubs.com) at +44 (0) 20 8332-8820 and ask them to check your status.

### Editorial Enhancements Coming

Pharmaprojects and Dialog will shortly be announcing details of editorial enhancements for 2001. These will include:

- Comprehensive information on indication and status for each drug
- An alerting service which highlights updates to data
- Coverage of 12 additional countries

Watch for more information in an upcoming issue of the *Chronolog*. ♦

## MEDLINE® Update

At the time of writing, the first updates for MEDLINE (F155/154/MEDL) have been received and are being processed. The reload of MEDLINE (2001 version) is also in progress.

With the resumption of updating and going forward, all MEDLINE updates will contain In-Process records (formerly known as PreMEDLINE). In-Process

records are added to the database by the National Library of Medicine (NLM) and do not carry indexing terms in order to speed up the entry of records into the database. Once indexed by NLM with Medical Subject Headings (MeSH) and other indexing terms, In-Process records will be replaced in the database by the definitive version.

We expect to provide customers with a search mechanism for identifying

In-Process records in MEDLINE. Further information on this search feature will be posted in HELP NEWS 155 for Dialog and BASE for DataStar as soon as it is available.

If you have any questions regarding the changes to the NLM databases, please contact your nearest Customer Services Helpdesk and watch for banner messages and future MEDLINE updates in the *Chronolog*. ♦

## DataStar Happy Hour on Foodline®: Current Food Legislation

On May 17 and 18, 2001, DataStar and Leatherhead Food are offering a Happy Hour on the Foodline®: Current Food Legislation database (File label: FOLE).

FOLE is a unique and authoritative source of food additive, composition and labeling legislation. References to standards

provide detailed information on the composition and labeling requirements of foods in seven EU countries, the USA, and Canada.

On May 17 and 18, connect time will be free, and you can download up to five records free of charge. If you print out

more than five records, you will be charged at the discount rate of \$15/SFr 21.75 per record that currently applies to this file until the end of August 2001 only.

Take advantage of this free offer to get to know Foodline: Current Food Legislation. ♦

## Kompass Product Classifications on DataStar Now Searchable in Five Languages

Two main Kompass files on DataStar allow for multi-country searching: KPEU includes the European countries and KPWO, the Middle East, Africa, Asia-Pacific and Americas. Now, KPEU and KPWO each have four sub-files within which the Product Classification paragraph (CC) can be searched and displayed in each of five languages. There are ten Kompass files in all.

For European countries, sub-files for product classifications are

KPEU - English      KPEI - Italian  
KPEF - French      KPES - Spanish  
KPEG - German

For Middle East, Africa, Asia-Pacific and Americas, sub-files for product classifications are

KPWO - English      KPWS - Spanish  
KPWF - French      KPWI - Italian  
KPWG - German

The connect per hour charge is SFr87.00 / US\$60.00 and SFr4.86 / US\$3.35 per full record.

The complete database search guide is available in BASE. Search BASE-KPEU or BASE-KPWO. The online datasheet is available at <http://ds.datastarweb.com/datasheets>. ♦

## Special Academic Discounts for Selected OnDisc Products

- World Surface Coatings Abstracts™ is a specialist product that will be of interest to academics, such as technical libraries of universities, who are involved in any kind of coatings research, including paints and adhesives. A new 40% discount for academic customers will make WSCA more affordable to university libraries. See <http://products.dialog.com/products/oddatas/wsca.html> for full product details.
- A new backfile for 1999 has been created for all four newspaper products: *Detroit Free Press*; *Miami Herald*; *Philadelphia Inquirer*, and the *Los Angeles Times*. A 40% discount for academic customers applies. See <http://products.dialog.com/products/oddatas/npapers.html> for further details. ♦

## RAPRA OnDisc Now Released

The RAPRA: Rubber & Plastics database comprises a large collection of carefully produced, extensively indexed summaries of published literature covering a wide scope of subjects encompassing technical, academic, commercial, and marketing aspects of the rubber and plastic industries. Source materials include over 500 journals, together with conference papers, patents, specifications and standards, books, reports, press releases,

company literature, data sheets and directories. Coverage is fully international with source material in a wide range of languages from 30 different countries, including North America, Australia, Europe, Japan, and China.

Six updates per year are available. A 15% academic discount applies. For further information, see <http://products.dialog.com/products/oddatas/rapra.html>. ♦

## Files Removed

- The Omaha World-Herald (File 683) has been removed from Dialog. Please discard the Bluesheet.
- Cable, Satellite & TV News (CSTN) has been removed from DataStar. For alternative databases, try BIDB (Business & Industry™), PTSP (Gale Group Promt), and INFO (ABI/INFORM®). ♦

# Search Solution

## Converting Embedded Tables into Excel

There are many records in Dialog databases that contain statistical data in the form of tables. One database that contains a number of tables is File 93, TableBase. It is often useful to place a table from a Dialog record into a report that you are creating; thus, it is important to be able to convert the data from a Dialog database into a spreadsheet, such as Excel. The following example illustrates this function.

If your search yields a record, which contains an embedded table that you would like to convert to Excel, just follow the steps below which converts the table from the Dialog Record shown in Figure 1 to a spreadsheet.

```
?b 93
File 93:TableBase(R) Sep 1997-2000/Apr W2
(c) 2000 Resp. DB Svcs.
Set Items Description
-----
?s ((cat or cats) and bird? and reptile? and dog?)/ti
31 CAT/TI
4 CATS/TI
5 BIRD?/TI
1 REPTILE?/TI
29 DOG?/TI
S1 1 ((CAT OR CATS) AND BIRD? AND
REPTILE? AND DOG?)/TI

?t s1/9
1/9/1
DIALOG(R)File 93:TableBase(R) Sep
(c) 2000 Resp. DB Svcs. All rts. reserv.
01042932 SUPPLIER NUMBER: 02278073
US survey of pet owners finds percentage that own
anywhere from zero to five or more dogs, cats,
birds, reptiles, "pocket pets" or ferrets in 1999
HOW MANY PETS PET OWNERS OWN
0 1 2 3 4 5 or more
Dog 3% 51% 28% 10% 4% 5%
Cat 9% 35% 26% 11% 8% 11%
Bird 51% 25% 11% 3% 4% 6%
Reptile 77% 13% 4% 1% 2% 4%
Pocket pet(*) 76% 11% 5% 2% 2% 4%
Ferret 84% 6% 6% 1% 1% 1%
Other 44% 23% 8% 3% 3% 20%
(*) Includes hamsters, guinea pigs, gerbils and
other small mammals
Not all rows add up to 100%, due to rounding.
Source: American Animal Hospital Association
SOURCE: American Animal Hospital Association
```

Figure 1

**Step 1:** Highlight the table of interest from the beginning of the table to the end, including any footnotes you want to include on your spreadsheet (See Figure 2).

Figure 2



From the **Edit** menu, select **Copy**.

From the **File** menu, select **Save Copy as**; then **Save Selection as...**

Choose to save the file as a text file in the **Save file as type:** box by selecting **Text Files (\*.TXT)**. Enter the name of the file in the File name box; then click the OK button.

**Note:** If you are using one of the web products, DialogWeb or DialogClassic, you will need to use your browser functions to copy the table and then use a word or text processor to save the file as a text file. To use Microsoft Word to do this, use the following steps:

1. Open Word.
2. From the **File** menu, select **New**. Select **Blank Document** from the General Category.
3. In the new document, use the **Edit** menu and select **Paste**.
4. From the File menu, select **Save As**. Choose to save the file as a text file in the **Save as type:** box by selecting **Text Only (\*.txt)**. Enter the name of the file; then click the **Save** button. You will be asked if you really want to save; click **Yes**. Close this document.

**Step 2:** Open Microsoft® Excel.

From the **File** menu, choose **Open**; then select the appropriate directory in the **Look in:** box. You will not see your text file until you change the **Files of type:** box to show **Text Files (\*.prn; \*.txt; \*.csv)**.

**Step 3:** Choose your file and click **Open**. You will be in the Text Import Wizard. Follow the instructions for the Wizard.

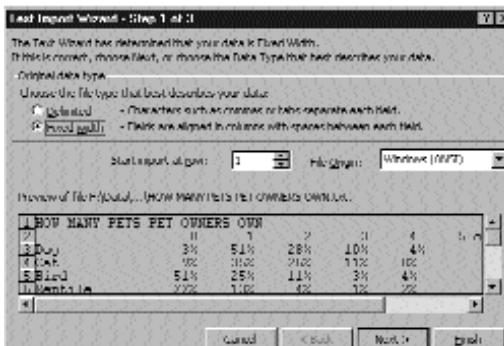
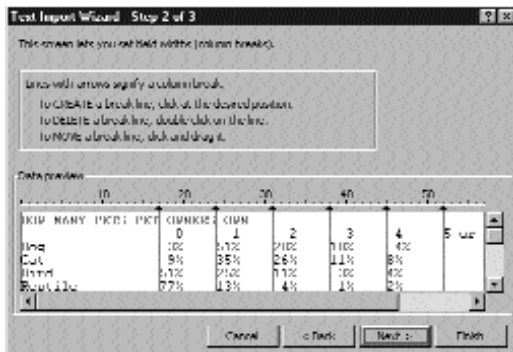


Figure 3

Make sure that the **Original Data Type** is set to **Fixed width**; then click **Next>** (See Figure 3).

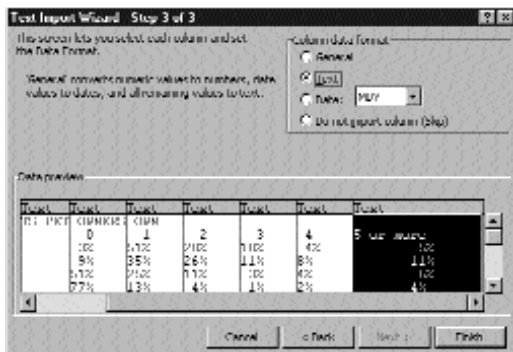
Continued on page 11

Figure 4



Follow the instructions on the screen to place your column breaks in the appropriate location. You may want to scroll down to make sure that

everything is lined up correctly. Ignore the text footnotes; they will be cleaned up later. Click <Next> (See Figure 4).



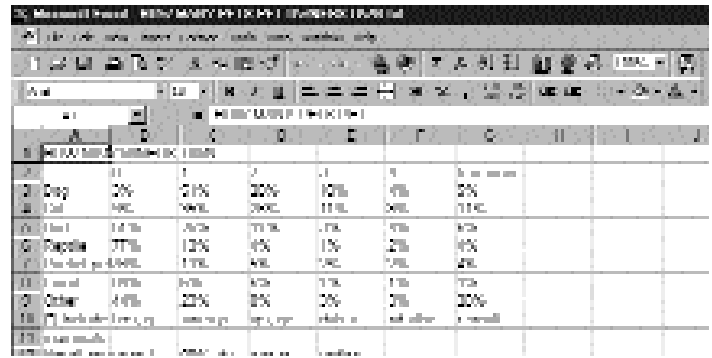
Choose the appropriate data type for each column by clicking the column; while the column is selected, click one of the radio buttons for

General, Text, Date, or Do Not Import Column (See Figure 5). The heading of each column will change to reflect your choice.

**Important Note:** If a column contains numbers and you are NOT going to be using the numbers to perform calculations, such as zip codes, select the data type of **Text**. Otherwise, the values can be converted so that a number such as 02714 becomes 2174.

Then click Finish.

Figure 6



**Step 4:** Widen the columns to the appropriate width, and edit the title and footnotes so that all information is in one cell per row. Then, add any other formatting desired. Finally, SAVE your file as an Excel workbook instead of a Text file when you are finished (See Figure 6).

Take advantage of the concise tables available in Dialog databases. You can now easily embed them in any report or presentation you are creating. ♦

## Keeping Current with Dialog Alerts

Keeping up-to-date is a major competitive advantage in today's fast-paced technological workplace. The Dialog Alerts service lets you store a search and have it run automatically when a database is updated. The stored search is run against the new items in the database, and the results are sent to you immediately by e-mail, fax, or postal mail. Each of Dialog's products — DialogWeb, Dialog Classic, DialogClassicWeb, DialogSelect, Profound, DataStar, and Dialog1 — enables users to create their own Alerts.

For your convenience, all of the Dialog seminars, online courses, and applications briefings provide an application illustrating how to create Alerts in specific subject areas. In addition, a two-hour briefing, entitled *Creating and Using Alerts*, focuses specifically on creating Alerts using DialogWeb, Dialog Classic, Profound, and DataStar. Check the training schedule for classes held in your area. The workbook is also available online in the Training Center at [http://training.dialog.com/sem\\_info/courses](http://training.dialog.com/sem_info/courses). Use the Dialog training materials as models and set up your own Alerts. ♦

## New Update Schedule for Harvard Business Review

Harvard Business Review has informed us that they will be increasing the update frequency for File 122/HBRO. Beginning in January 2001, the file will update 10 times per year. The file will update monthly with the exception of two months, which will be combined. The December/January 2002 update will contain articles spanning both months, as with the combined issue for July/August.

Harvard Business Review provides a complete range of strategic management subjects of interest to professional managers or researchers, including accounting, automation, business ethics, industry analysis, strategic planning, and trade. ♦

## Training Schedule

Training classes on Dialog are held throughout the world. For the most current schedule for all locations, check the DialogWeb site at <http://training.dialog.com/>. To register, U.S. clients should call the Knowledge Center at 1-800-3DIALOG (800-334-2564).

### Northeast

#### Boston, MA

- 4/23 Chemical Information Seminar
- 4/25 Developing Patent Research Expertise, Pt. 3: Prior Art
- 4/25 Developing Patent Research Expertise, Pt. 4: Competitive Intelligence
- 4/26 Developing Dialog Searching Expertise, Pts. 1 & 2: Fast Start and Intermediate
- 4/26 Intellectual Property: Trademarks & Copyright
- 4/30 Engineering Information & Techniques
- 5/3 Company Intelligence
- 5/3 Market Intelligence
- 5/7 Dialog Application Briefing: Environmental Issues
- 5/9 Biomedical Information Seminar
- 5/10 Developing Dialog Searching Expertise, Pt. 3: Advanced
- 5/10 Developing Dialog Searching Expertise, Pt. 4: Power Searching
- 5/14 Fundraising with Dialog
- 5/16 Dialog Application Briefing: Aerospace & Defense
- 5/16 Developing Dialog Searching Expertise, Pts. 1 & 2: Fast Start and Intermediate
- 5/17 Pharmaceutical Science Searching
- 5/17 Pharmaceutical Business Searching
- 5/21 Chemistry for Non-Chemists
- 5/23 Developing Patent Research Expertise, Pt. 1: Patent Search Basics
- 5/23 Developing Patent Research Expertise, Pt. 2: Patent Families & Legal Status
- 5/24 Developing Patent Research Expertise, Pt. 3: Prior Art
- 5/23 Developing Patent Research Expertise, Pt. 4: Competitive Intelligence
- 5/30 Intellectual Property: Trademarks & Copyright

5/31 Developing Dialog Searching Expertise, Pt. 3: Advanced

5/31 Developing Dialog Searching Expertise, Pt. 4: Power Searching

#### New York, NY

- 4/25 Brown Bag: Basic Chemical Searching
- 4/26 Searching Dialog: The Basics
- 5/2 Searching Basics via DialogWeb
- 5/9 Brown Bag: Profound
- 5/15 Searching Dialog: The Basics
- 5/23 Search Basics via DialogWeb

### South

#### Dallas, TX

- 4/25 Company Intelligence

### West

#### San Diego, CA

- 4/23 Developing Patent Research Expertise, Pt. 1: Patent Search Basics
- 4/23 Developing Dialog Searching Expertise, Pts. 1 & 2: Fast Start and Intermediate
- 5/14 Developing Dialog Searching Expertise, Pts. 1 & 2: Fast Start and Intermediate
- 5/14 Developing Patent Research Expertise, Pt. 1: Patent Search Basics
- 5/15 Developing Patent Research Expertise, Pt. 2: Patent Families & Legal Status
- 5/15 Developing Patent Research Expertise, Pt. 3: Prior Art

#### Los Angeles, CA

- 5/17 Developing Dialog Searching Expertise, Pt. 1 & 2: Fast Start and Intermediate
- 5/17 Developing Patent Research Expertise, Pt. 1: Patent Search Basics
- 5/18 Developing Patent Research Expertise, Pt. 2: Patent Families & Legal Status
- 5/18 Developing Patent Research Expertise, Pt. 3: Prior Art

#### Seattle, WA

- 4/26 Developing Patent Research Expertise, Pt. 1: Patent Search Basics
- 5/18 Developing Dialog Searching Expertise, Pts. 1 & 2: Fast Start and Intermediate

### Midwest

#### Chicago, IL

- 4/24 Developing Patent Research Expertise, Pt. 3: Prior Art
- 4/24 Developing Patent Research Expertise, Pt. 4: Competitive Intelligence
- 5/8 Developing Dialog Searching Expertise, Pts. 1 & 2: Fast Start and Intermediate
- 5/10 Biomedical Information Seminar
- 5/22 Asia-Pacific Corporate Intelligence

#### St. Paul, MN

- 4/25 Intellectual Property: Trademarks & Copyright
- 4/25 Developing Patent Research Expertise, Pt. 3: Prior Art

#### Ypsilanti, MI

- 5/1 Developing Dialog Searching Expertise, Pts. 1 & 2: Fast Start and Intermediate
- 5/1 Developing Patent Research Expertise, Pt. 1: Patent Search Basics

#### Aurora, CO

- 5/24 What's New/Refresher

### MidAtlantic

#### Arlington, VA

- 4/24 Developing Dialog Searching Expertise, Pts. 1 & 2: Fast Start and Intermediate
- 4/26 Developing Dialog Searching Expertise, Pt. 3: Advanced
- 4/26 Developing Dialog Searching Expertise, Pt. 4: Power Searching
- 5/3 Search Basics via DialogWeb
- 5/10 How to Find Conference Literature
- 5/16 Intellectual Property Update
- 5/22 Developing Dialog Searching Expertise, Pts. 1 & 2: Fast Start and Intermediate
- 5/23 Developing Dialog Searching Expertise, Pt. 3: Advanced
- 5/23 Developing Dialog Searching Expertise, Pt. 4: Power Searching
- 5/31 Developing Patent Research Expertise, Pt. 1: Patent Search Basics

#### Philadelphia, PA

- 4/24 Search Basics via DialogWeb

## Continuing Education Credit (CEU) Available for Dialog Courses

For more than 10 years, Dialog has offered customers continuing education credit when they attend Dialog training classes. Attendance at a full-day class earns 0.7 continuing education units (CEU), and a half-day class 0.3 CEU.

Dialog is pleased to announce that Dialog courses have just been recertified by the International Association of Continuing Education & Training (IACET) through 2006.

To receive credit for a class attended, notify the instructor at the end of class that you want CEU credit for attendance. A certificate will be forwarded to you from the Dialog Training office. ♦