



TABLE OF CONTENTS

COMPANY UPDATE

Dialog Enhances Flagship Command Search Interface 1

From the Editor 2

Dialog at SLA 2

Trade Shows 4

Classroom Training in Europe 10

Training Schedule 11

U.S. Web-Based Training 11

NEW ON DIALOG

Derwent World Patents Index First View<sup>SM</sup>: Your New, Early Look at Published Patent Documents 4

Dialog Expands SciTech Collection with AeroBase (File 104) 5

PsycINFO Enhanced on Dialog and Dialog DataStar 5

USP DI<sup>®</sup> (File 461) on Dialog Updates Again 5

Improved Updating for Pharmaceutical and Healthcare Industry News Database (PHIND) 6

Pharmaprojects Enhancements Slated for 2004: New Data Fields to Aid the Drug Discovery and Development Process 6

NEW ON DIALOG NEWSEDGE

Dialog NewsEdge Adds Live News Alerting 7

continued on page 3

FROM THE EDITOR

Each issue of the *Chronolog* showcases new databases and enhancements to products, and this issue is no exception. The story on page 1 reports on the Dialog command search interface DialogLink, which has undergone major enhancements. Articles on the new SciTech databases include Derwent World Patents Index First View on page 4 and AeroBase on page 5. Other stories feature enhancements to Dialog NewsEdge, Dialog Profound and Dialog Intelliscope—on pages 7, 8 and 10, respectively.

And, at the Special Libraries Association Annual Conference in the United States in June, you can visit the Dialog (601) and Quantum<sup>2</sup> (804) booths to see Dialog enhanced products and attend the many conference functions sponsored by Dialog.

C O M P A N Y U P D A T E

Dialog at SLA

Dialog, the Special Library Association's (SLA) Information Professional Partner, is a major sponsor at the Special Library Association 2004 Conference in Nashville, Tennessee, again this year. As is customary, Dialog plans to be an active participant and is sponsoring a number of conference-wide activities.

Some of the Dialog-sponsored activities include:

- ▶ A new "Hot Topic" program – three sessions, one on each of the three days of the conference. These sessions will feature emerging technologies and issues in the information industry.
- ▶ The Leadership Development Institute on Sunday, June 6, for current and incoming division chairs and chapter presidents
- ▶ Four half-day Quantum<sup>2</sup> sessions, each including two 90-minute Quantum<sup>2</sup> modules, as part of the SLA Continuing Education program. The half-day session topics are:
  - ROI Preparation & Defense
  - Understanding Your Business Environment
  - Assessing Your Business & Strategic Competencies
  - Creating Brand Identity

In addition, Dialog is sponsoring 20 divisional conference program events and will also present the annual InfoStar awards for information professionals demonstrating leadership in the field, as well as the Roger K. Summit Scholarship for North America. We will also sponsor two "Dialog Scholars" from the University of Kentucky, in partnership with the Southern Appalachian Chapter, the host chapter for the conference. Consult the conference program for more information about Dialog events at SLA.

Dialog staff will also be involved in several program events sponsored by the Divisions. Look for the following contributions:

- ▶ Viji Krishnan, Vice President, Publisher Management, will speak on the *Engineering Resources for Small Libraries* panel.
- ▶ Bonnie Snow, Director, Pharmaceutical Market, will present a CE course titled *Pharmaceutical Regulatory Resources Online* and will participate in a vendor update program for the Pharmaceutical Division.
- ▶ Al Zink, Vice President, Human Resources, will participate in a panel on *Diversity and Mentoring*.
- ▶ Allison Evatt, Graduate Education Consultant, will moderate a *Nontraditional Pursuits* panel.
- ▶ Betty Jo Hibberd, Manager, Information Professional Development, will moderate a panel titled *State of the Information Profession from a 20,000 Ft. High Perspective*.

At the Dialog booth (601), see many new product releases, such as enhanced DialogLink, in addition to major enhancements to Dialog Profound, Dialog NewsRoom, Dialog NewsEdge, Dialog Intelliscope and Dialog API. Or, speak with a Quantum<sup>2</sup> coach at the Quantum<sup>2</sup> booth (804).

Dialog is the place to go again this year at SLA!

continued from page 1

## Dialog Enhances Flagship

between author subfields, by creating or adjusting the template, selecting the downloaded records, and then automatically building the report.

### LINKING

Dialog eLinks helps to get the most out of eJournal subscriptions giving you more content to work with. If you are looking to link through to various eJournals vital in science and technical searching, you can now access these documents via DialogLink. Additionally, URLs will now link directly to pages on the open Web. In an effort to provide these same features for classic Dialog DataStar searches, DataStar Classic Web can now be launched from within the new DialogLink, gaining a powerful command interface and improved linking capabilities. In Investext® PDF Index (File 745), you can now access Investext PDF documents.

### SECURE ACCESS

DialogLink not only improves performance and increases productivity, it also provides a secure connection option – essential in today's competitive environment. If you want this increased level of security, you can connect to Dialog services via an HTTPS connection, a Verisign-certified secure connection.

### ENHANCED SEARCH FEATURES

Alerts management has been made even easier with DialogLink. Alerts can now be edited via a new editing window, instead of requiring the line editor.

DIALINDEX (File 411) has been enhanced with easy selection features, including checkboxes and buttons to select, rank and begin databases.

In addition to classic EXPAND, DialogLink provides Visual Expand (VE), which presents 50 terms in a single window, and terms can be selected via checkboxes. The terms are then automatically combined using "OR" to create a search set. Alerts can now be created directly, instead of requiring the editing and replacement of the "e" ranges in older versions of the software. It has never been easier to browse the indexed terms and select all relevant variations and options. The Visual Expand window also offers EXPLODE, which allows you to retrieve related narrower terms in files with thesauri.

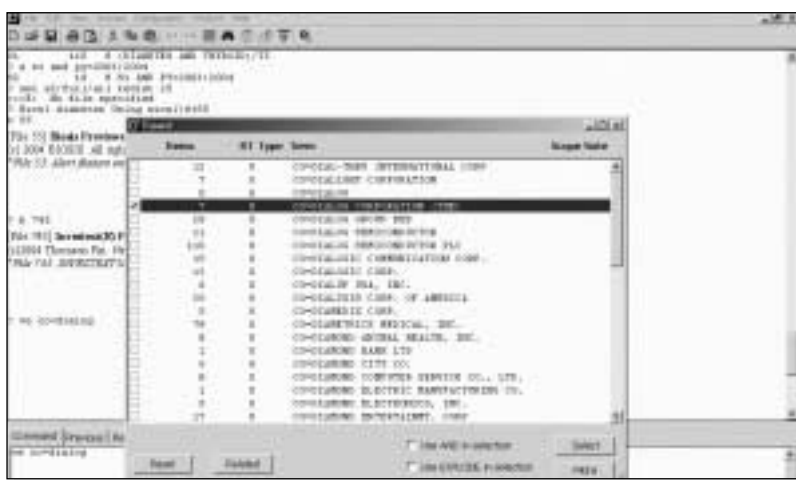


Figure 2

With Market Records you can manage and edit snippets of data in a "marked text" window. The contents of this window can then be saved as text (TXT), Word (DOC), Rich Text Format (RTF), HTML, or PDF through Adobe® Acrobat®. Alternatively, text can be moved to another application, which means the Marked Records window can now serve as a project window to hold key facts and information.

continued on page 6

Table of contents continued

#### NEW ON DIALOG NEWSROOM

*The Asian Banker Journal*  
Added to Dialog  
NewsRoom and Dialog  
NewsEdge 8

Profile Publishing Titles  
Added to Dialog  
NewsRoom 8

#### NEW ON DIALOG PROFOUND

New Features Further  
Enhance Dialog Profound  
and Dialog NewsRoom 8

#### NEW ON DIALOG DATASTAR

Dialog DataStar Adds  
Scope Notes 9

Enhanced Drug Reference  
Database 9

ToxFile Reloaded on  
Dialog DataStar 9

British Nursing Index  
Provides Abstracts 9

CINAHL® Reloaded with  
Content Enhancements 9

OldMedline, 1951-1965,  
Now on Dialog  
DataStar 12

Embargo Lifted on  
F-D-C Reports  
(File 187/FDCR) 12

#### NEW ON DIALOG INTELLISCOPE

New Report Management  
Features Added to Dialog  
Intelliscopes 10

#### TIPS AND TECHNIQUES

Searching by Publication  
Date (PD=) for Non-  
Numeric Designations 5

Locating Merger and  
Acquisition Transactions  
That Include Deal Value 6

## NEW ON DIALOG

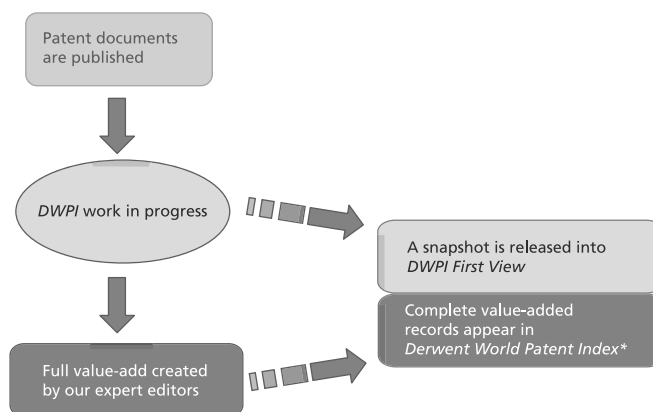
## Derwent World Patents Index First View<sup>SM</sup> (File 331): Your New, Early Look at Published Patent Documents

Dialog users can now get an early look at published patent documents with Derwent World Patents Index First View (DWPI First View<sup>SM</sup>)—the new, fast-alerting companion file to Derwent World Patents Index<sup>®</sup> (DWPI<sup>®</sup>).

User feedback has highlighted the importance of both early identification of key patent documents and completeness of coverage in Derwent World Patents Index<sup>®</sup> (Files 350, 351, 352), even before the documents have been fully indexed and made available online.

To address this need, Thomson Scientific and Dialog have launched a new rolling companion file – Derwent World Patents Index First View<sup>SM</sup> (File 331). Accessing this file gives you alerting access to bibliographic, selected text and author data from new patent documents within days of publication by 40 major patent-issuing authorities. Once the value-added Derwent patent abstract has been created for that document and the complete DWPI record released, the corresponding DWPI First View record is removed.

### Relationship Between DWPI and DWPI First View



\*Corresponding records disappear from DWPI First View once full value-added records appear in DWPI.

### FEATURES

Each record in DWPI First View is uniquely enhanced to help you easily locate and understand the information. Each record in DWPI First View:

- ▶ Contains enhanced bibliographic data for all patent documents
- ▶ Differentiates between new inventions (basic patents) and the latest additions to existing patent families (equivalent patents)
- ▶ Provides original titles, abstracts and technical drawing images for major patent-issuing authorities
- ▶ Offers English-language abstracts for patents from China, Japan, Korea, Taiwan and Russia

By searching DWPI First View in combination with Derwent World Patents Index, you can maximize your retrieval of important patent information and ensure that you get the complete picture of worldwide patenting activity. Use the files together to monitor emerging technologies, identify leading inventors, carry out due diligence, and protect your R&D investment.

Look at the Dialog Bluesheet at [library.dialog.com/bluesheets/html/bl0331.html](http://library.dialog.com/bluesheets/html/bl0331.html) to find out more about DWPI First View and check the Thomson Derwent Web site at [www.thomsonderwent.com/dwpifv](http://www.thomsonderwent.com/dwpifv).

### TRADE SHOWS

May 1-5  
Atlanta, Georgia  
International Trademark  
Association Annual Meeting

May 21-26  
Washington, D.C.  
Medical Libraries Association  
Annual Meeting

May 22-27  
Baltimore, Maryland  
Patent Information User Group  
Annual Meeting

May 25-27  
Prague, Czech Republic  
Inforum 2004

June 5-10  
Nashville, Tennessee  
Special Libraries Association  
Annual Conference

June 6-9  
Los Angeles, California  
International Association of  
Business Communicators  
International Conference

June 8-10  
Paris, France  
I-Expo 2004

June 8-10  
New York, New York  
Security Industry Association  
Technology Management  
Conference

June 15-17  
Frankfurt, Germany  
Cominfo 2004

## Dialog Expands SciTech Collection with AeroBase (File 104)

AeroBase (File 104) is a new resource on Dialog for scientific and technical research. It provides references, abstracts, and controlled-vocabulary indexing of key scientific and technical documents. Coverage includes journal articles, preprints, conference papers, books, theses and unpublished report literature, covering aerospace research and development.

This database supports basic and applied research in aeronautics, astronautics, and space sciences, as well as technology development and applications in complementary and supporting fields such as chemistry, geosciences, physics, communications, and electronics. Information on topics, such as Aircraft Design and Instrumentation, Propellants and Fuels, Lasers and Masers, Structural Mechanics, Fluid Mechanics and Heat Transfer and much more is included in AeroBase.

Updated monthly, AeroBase currently goes back to 1999, with plans to extend the time period covered. AeroBase is the first of several developments Dialog has under way to increase its coverage of key areas of scientific and technical research.

## PsycINFO Enhanced on Dialog and Dialog DataStar

PsycINFO on Dialog (File 11) provides several enhancements. These include the addition of 2,000+ thesaurus terms, improved Cited Reference fields, and the addition of e-mails to Author Name fields. Saved searches and Alert strategies will not be affected.

In addition, ONTAP PsycINFO (File 212) has been reloaded on Dialog to match the design of File 11. File 212 contains 54,181 randomly selected records from File 11 with dates ranging from 1840 to 2003, including all record types (citations, abstracts, references, and table of contents). See the File 11 Bluesheet for more information.

The PsycINFO (PSYC) database was also reloaded on Dialog DataStar to include an online version of PsycINFO's Thesaurus of Psychological Index Terms with approximately 6,000 terms. Users can search the thesaurus with ..THES to identify appropriate terms and the ..TREE command to see a term in its tree structure(s). Synonyms are also included in the thesaurus and will point users to the correct indexing term that should be used for searching. A new vocabulary database (YVOC), containing a directory of all the Psychological Index Terms along with their scope notes, synonyms and background information is now available.

For more information, see [online story at support.dialog.com/publications/chronolog/200405/](http://support.dialog.com/publications/chronolog/200405/)

## USP DI® (File 461) on Dialog Updates Again

Dialog is pleased to be able to report that the latest edition of USP DI® Volume I, Drug Information for the Health Care Profession (File 461) is now available. The file is expected to update regularly at quarterly intervals. It is now produced by Micromedex, a Thomson Healthcare company that licenses the content from USP.

USP DI Volume I provides information about labeled and off-label uses for more than 11,000 generic and brand name drugs dispensed in the U.S. and Canada. Information about existing and new drugs is constantly changing, so it can be difficult to keep track of the latest developments. The database contains fully reviewed, industry-respected drug information to support prescribing and dispensing decisions. In-depth monographs cover dosing, indications, interactions, pharmacology/ pharmacokinetics, side/adverse effects, and patient counseling guidelines.

Refer to the Bluesheet for File 461 for further information and guidance on how to search this key source of drug information.

### SEARCH TIP

SEARCHING BY  
PUBLICATION DATE (PD=)  
FOR NON-NUMERIC  
DESIGNATIONS

If a source has a publication date that designates a season or month rather than a numeric date, Dialog automatically assigns an eight-digit publication date for consistency. The designations are as follows:

Spring YYYY0300

Summer YYYY0600

Fall YYYY0900

Winter YYYY1200

March YYYY0300

August YYYY0800 etc.

### Example:

```
?s pd=20020300
      S1      2235 PD=20020300
?t s1/3/1

1/3/1
DIALOG(R)File 553:Wilson Bus.
Abs. FullText
(c) 2002 The HW Wilson Co. All
rts. reserv.

04861435 H.W. WILSON RECORD
NUMBER: BWBA02111435
As need for vision care grows,
vendors add specialty features
to their offerings.

Paetsch, Lauren
Employee Benefit Plan Review v.
56 no9 (Mar. 2002) p. 18, 20
LANGUAGE: English
```

Richard Levy  
Knowledge Center

## SEARCH TIP

## LOCATING MERGER AND ACQUISITION TRANSACTIONS THAT INCLUDE DEAL VALUE

To locate merger and acquisition transactions that include the value of the deal, TFSD Worldwide Mergers & Acquisitions (File 551) can be used. After you have located the applicable M&A records, the records with no deal value (these can be identified using DV=NA) can be eliminated from your set with the NOT operator, as in the example: S AQ=CISCO? NOT DV=NA.

Deborah Stine, Knowledge Center

## Improved Updating for Pharmaceutical and Healthcare Industry News Database (PHIND)

The time of the daily newsletter update for PHIND (Files 129,130/PHIN,PHIC) has moved from 10 a.m. on the current day to 4 p.m. on the previous day. This change improves the timeliness of the newsletter updating, with stories now appearing in the database on the same day they are written.

## NEW ON DIALOG

## Pharmaprojects Enhancements Slated for 2004: New Data Fields to Aid the Drug Discovery and Development Process

Pharmaprojects (File128/PHAR), the pharmaceutical pipeline database published by PJB Publications Ltd., is currently developing some major enhancements to data across its 31,000 drug profiles, which are due to be integrated into the database later this year.

The most significant of these will be searchable information covering the specific protein targets of drugs that are currently in development or have been since 1980. This information will provide the "missing link" from the pipeline database into the vast amount of information garnered from the Human Genome Project held on public databases and will for the first time enable users to establish a direct connection between drug activity and biological target. This will augment the use of the database for business decisions in both drug discovery and drug development.

A second major development will be the addition of a number of searchable physiochemical fields – the so-called "Lipinski rule of 5" parameters, which have been shown to be extremely important in estimating the chances of a drug successfully reaching the market.

Look for full details on the new fields and how to use them in future editions of *Chronolog*.

continued from page 3

## Dialog Enhances Flagship

The Type Ahead buffer includes the "previous commands" tab, which keeps a record of the commands entered during a search session. These can be re-executed by going to the tab and double-clicking the correct command, saving valuable time and increasing accuracy by eliminating typing.

## EXPANDED ACCOUNT MANAGEMENT CAPABILITIES

DialogLink has always offered accounting records to help searchers keep track of costs. This has most often been used with subaccounts to allow searchers to bill back for their work. Now DialogLink adds more power by enabling you to track accounting records by user, subaccounts and projects. Projects and subaccounts can be set up ahead of time in the configuration settings and will automatically track your search costs, providing a level of detail previously unseen in the accounting file.

## EASIER PREFERENCES MANAGEMENT

Dialog command language previously required searchers to use the SET commands and consult a search guide for syntax. DialogLink 4.0 simplifies this process, by offering a Preferences panel, which allows for customized search environments. Sliding the mouse over each label shows the default or range options, and clicking in each field shows the equivalent SET command.

## GETTING STARTED

To get more information on DialogLink 4.0, or to download it, see: <http://www.support.dialog.com/downloads/dialoglink/> or contact your Dialog sales representative or Knowledge Center.



NEW ON DIALOG PROFOUND

**The Asian Banker Journal Added to Dialog NewsRoom and Dialog NewsEdge**

Southeast Asian content on both Dialog NewsRoom and Dialog NewsEdge has been further strengthened with the addition of this important business title from Singapore. The content comprises a mix of news, analysis and industry data and is divided between *The Asian Banker Journal*, the flagship bimonthly publication, carrying news and analysis of key developments in the financial services sector, and *E-Newsletters and Pages*, which is designed to provide a focus on critical areas of industry. The contents place particular emphasis on areas such as strategy, operations, risk management, payment systems, distribution, human resources and technology.

**Profile Publishing Titles Added to Dialog NewsRoom**

Publications, such as *Management, Marketing Magazine* and *Admedia's Fastline* from the key New Zealand publisher Profile Publishing, are now available. These are just some of a large number of New Zealand titles that are being added to Dialog NewsRoom. All important sources to New Zealand decision makers, they will join the new titles from the Southeast Asian area, Australia and New Zealand available through the Australian aggregator News Bites.

**New Features Further Enhance Dialog Profound and Dialog NewsRoom**

Several new features enhance the functionality of Dialog Profound and Dialog NewsRoom.

**ALERTS AT SIGN ON**

When you sign on to Dialog Profound and Dialog NewsRoom, you can now choose to be notified of your new Alerts.

From My Dialog, select Preferences and the Alerts link to set the Preference option to "Yes." See Figure 1. Recent Alerts displays, containing up to two days of Alerts. When you have a new Alert that you have not viewed since signing on, you will be taken directly to the Recent Alerts page. Note: You can also disable e-mail delivery of Alerts without deleting the Alerts and use only the Alerts at Sign On feature for receiving them.



Figure 1

**ALERTS FORMATTING**

To make Alerts easier to use, enhancements have been made to the Alerts formatting.

- ▶ Formatting for the title, publication date and source makes the Alert title list easier to read. See Figure 2.
- ▶ On the Recent Alerts page, a link to My Documents allows you to view the Alert archive. The citation information displayed now includes the Alert run date. See Figure 3.
- ▶ The Alerts folders contain an archive of Alerts accessible for up to 90 days.



Figure 2

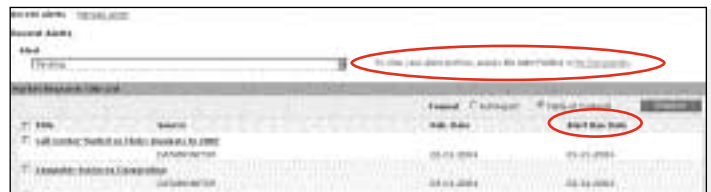


Figure 3

**OTHER FEATURE ENHANCEMENTS**

- ▶ **Automatic Sign-On.** Now you can choose to sign on to Dialog Profound and Dialog NewsRoom without entering your User ID and password by clicking a link that bypasses the sign-on page. To set up this feature, send an e-mail to the Knowledge Center at [customer@dialog.com](mailto:customer@dialog.com) with your company name, customer's name and contact information and your User ID and password. The Knowledge Center technical support staff will contact you to assist in activating this feature.
- ▶ **Date Range.** Last Month has been added to the drop-down menu for Publication Date Range. This will be the default for Dialog NewsRoom searches.
- ▶ **Number of Titles Displayed.** It is now possible to display up to 100 titles in your Dialog NewsRoom titles list. You can change the default number in My Dialog Preferences.

NEW ON DIALOG DATASTAR

### Dialog DataStar Adds Scope Notes

Dialog DataStar has enhanced some of its biomedical databases with online thesauri to include Scope Notes. The following databases contain Scope Notes:

- ▶ MEDLINE®
- ▶ EMBASE®
- ▶ CINAHL®
- ▶ Psychological Abstracts
- ▶ ToxFile
- ▶ CANCERLIT®

Scope Notes provide information about the terms used for indexing. Depending on the database, they contain a description of the meaning of the term, a history note indicating how long the term has been used to index articles, previously used indexing terms, and synonyms of the term and related terms.

HOW IT WORKS

The thesaurus can be accessed in different ways: by browsing, by entering a term or by using thesaurus mapping. When you display the thesaurus in one of the databases, a new yellow icon displays in front of each thesaurus term. Click the icon to display the Scope Notes in a separate window. See Figure 1.

The Scope Notes display when accessing the thesaurus and also when displaying a record. You can check the meaning of a particular thesaurus term and how it is used at any time during the search process.

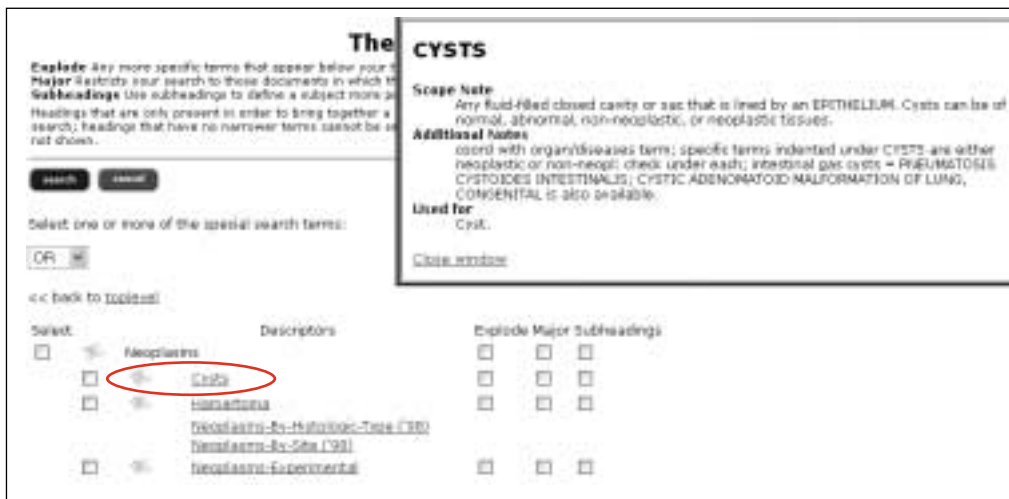


Figure 1: Thesaurus List Terms in MEDLINE with Scope Notes

### Enhanced Drug Reference Database

Martindale, the Complete Drug Reference database (MART) on Dialog DataStarWeb has been enhanced with a new search feature to make it easier to reconstruct the full drug monograph as published in the Martindale hard copy reference. The code that links all the associated drug-monograph documents now appears in the Cross References field. By clicking this code, users can instruct the system to perform a search that retrieves all the corresponding documents. See the Martindale Datasheet for more information.

continued on page 12

### ToxFile Reloaded on Dialog DataStar

ToxFile (TOXL) on Dialog DataStar has been reloaded so that MEDLINE-derived records are now updated with 2004 Medical Subject Headings (MeSH). The March/April *Chronolog* discussing the MEDLINE reload on Dialog and Dialog DataStar has further details on the 2004 MeSH® changes. If you have Alerts running in ToxFile, check into the 2004 changes to ensure that you receive the desired output.

### British Nursing Index Provides Abstracts

Responding to customer requests, the publisher of British Nursing Index (BNID) on Dialog DataStar will start providing abstracts with the March 2004 updates. Before that date, citations only are available.

### CINAHL Reloaded with Content Enhancements

Each year, CINAHL (NAHL) on Dialog DataStar is reloaded to include the new CINAHL Subject Headings. This year's reload also features some content enhancements with the addition of fulltext PDF documents for over 4,000 records, viewable in Dialog DataStarWeb. Later this year, CINAHL will provide Continuing Education Module information for nurses. This will also be available in PDF format.

NEW ON DIALOG INTELLISCOPE

TRAINING

Classroom Training in Europe

For more classes or to register for any of the following European classroom training offered in June and July, visit our Web site at [www.dialog.com/training](http://www.dialog.com/training).

Milan, Italy

- 6/15 Dialog DataStarWeb
- 6/15 DialogWeb—Basic
- 6/15 DialogWeb—Advanced
- 6/23 Dialog Profound

Hamburg, Germany

- 6/22 Dialog DataStarWeb Introduction
- 6/22 DialogWeb—Guided

Frankfurt, Germany

- 6/30 TradStatWeb

Paris, France

- 6/1 DialogWeb—Basics
- 6/1 DialogWeb—Advanced
- 6/10 Dialog DataStarWeb
- 6/18 Dialog Profound
- 6/22 Dialog DataStarWeb—Basics
- 6/22 Dialog DataStarWeb—Advanced

London, England

- 6/10 Dialog DataStarWeb
- 6/15 Dialog Profound
- 6/22 DialogWeb—Basics & Advanced
- 6/23 Getting the Best Patent Information
- 6/24 Dialog DataStar Biomedical Information
- 6/29 DialogWeb—Guided

Stockholm, Sweden

- 6/3 Dialog Profound
- 6/7 DialogWeb—Guided
- 6/8 Company Directories
- 6/8 Company Financials & Broker Information
- 6/8 Market Research
- 6/8 Company Intelligence & News
- 6/25 Dialog DataStarWeb

New Report Management Features Added to Dialog Intelliscope

BROWSE AND STORE REPORTS; SAVE AND PRINT SELECTED REPORTS IN ONE STEP

In response to many requests from our customers, Dialog Intelliscope has been enhanced to enable “batch” printing and saving of Broker Research reports and First Call Notes. New “Report Management” options have been added to the Dialog Intelliscope interface. These new options streamline the process for printing and saving these documents. Now you can put reports of interest in a virtual “basket” as you search, or when you review Alerts or Post & Share documents. When you’re finished, print or save reports in one step. Although reports are saved in one operation, each document is saved as an individual file: Broker Research in PDF format; First Call Notes in HTML format.

HOW IT WORKS

Click checkboxes to place documents in your basket. The new Report Management options appear in the left-hand menu bar. A “Basket Count” keeps track of how many documents you have selected. Once you have clicked “Add to Basket,” the screen will refresh and the Basket Count is updated. The selected reports now have an icon indicating that you have selected that report. See Figure 1.

Click View Basket to display a list of documents you have added to your basket. Once you have chosen all documents for the basket, you are ready to “batch download.” You can select one of the following:

- ▶ Save Selected—Batch download the selected reports
- ▶ Print & Save Selected—Batch download the selected reports and then print
- ▶ Remove Selected—Remove any reports you don’t want in your basket

The Download Manager shows the status of documents being downloaded. See Figure 2.

Using these new Report Management features on Dialog Intelliscope enables you to enhance the information flow in your organization and save time doing it.

For more information, contact the Dialog Knowledge Center or your account representative.



Figure 1



Figure 2

## Training Schedule

Training classes on Dialog services are held throughout the world. New classes are always being added, so for the most current schedule and for registration information for all locations, check the Dialog Web site at [www.dialog.com/training](http://www.dialog.com/training). Highlighted in this issue are classes in the United States, Canada, China, Italy, Germany, France, Sweden and the United Kingdom.

### Atlanta, Georgia

- 5/11 Basic Skills Review
- 5/17 Basic Patents Searching on DialogWeb
- 5/25 Company Intelligence
- 6/8 Pharmaceutical Business Seminar
- 6/15 Introduction to Dialog Featuring DialogWeb
- 6/22 Developing Searching Expertise: Advanced and Power Searching

### Cary, North Carolina

- 5/20 Biomedical Information on Dialog
- 6/3 Basic Skills Review
- 6/17 Introduction to Dialog Featuring DialogWeb—Command

### Chicago, Illinois

- 5/11 Introduction to Dialog Featuring DialogWeb—Command
- 5/11 Patent Research Basics Featuring DialogWeb
- 6/17 Basic Skills Review for Command Searchers
- 6/17 Forgotten Commands & Features
- 6/17 Customizing Reports

### Arlington, Virginia

- 5/11 Introduction to Dialog Featuring DialogWeb—Command
- 5/12 Introduction to Trademark Searching Using DialogWeb
- 5/19 Fast Start to Dialog DataStarWeb
- 5/25 Introduction to Dialog Featuring DialogWeb—Command
- 5/26 Patent Families & Legal Status Featuring DialogClassic
- 6/2 Introduction to Dialog Featuring DialogClassic
- 6/8 Patent Research Basics Featuring DialogClassic
- 6/9 Fast Start to Dialog Profound
- 6/9 Developing Patent Research Expertise: Prior Art

### Los Angeles, California

- 6/9 Basic Skills Review for Classic Dialog Searchers
- 6/9 Company Intelligence

### Mountain View, California

- 5/11 Introduction to Dialog Featuring DialogClassic
- 5/26 Patent Research Basics Featuring DialogClassic
- 5/26 Patent Families & Legal Status Featuring DialogClassic
- 6/16 Fast Start to Dialog DataStarWeb
- 6/16 Company Intelligence

### San Francisco, California

- 5/13 Basic Skills Review for Classic Dialog Searchers
- 5/24 Biomedical Seminar
- 5/24 Pharmaceutical Business Seminar
- 6/11 Introduction to Dialog Featuring DialogClassic
- 6/11 Company Intelligence
- 6/18 Developing Dialog Search Expertise: Advanced
- 6/18 Pharmaceutical Science Seminar

### Seattle, Washington

- 6/19 Introduction to Dialog Featuring DialogClassic
- 6/19 Patent Research Basics Featuring DialogClassic
- 6/20 Introduction to Trademark Searching Using DialogWeb

### Philadelphia, Pennsylvania

- 5/17 Introduction to Dialog Featuring DialogWeb
- 5/26 Basic Skills Review for Classic Dialog Searchers
- 6/7 Patent Research Basics Featuring DialogClassic
- 6/21 Introduction to Dialog Featuring DialogWeb
- 6/23 Basic Skills Review for Classic Dialog Searchers

### Boston, Massachusetts

- 5/19 Introduction to Dialog Featuring DialogClassic
- 5/20 Fast Start to DialogSelect
- 6/15 Basic Skills Review for Classic Dialog Searchers
- 6/30 Introduction to Dialog Featuring DialogWeb—Command

### New York, New York

- 5/12 Getting Started on Dialog NewsRoom
- 5/18 Fast Start on Dialog DataStarWeb
- 5/27 Basic Skills Refresher for Classic Dialog Searchers
- 6/2 Introduction to Dialog Featuring DialogWeb—Command
- 6/9 Market Intelligence
- 6/16 Getting Started on Dialog Profound
- 6/23 Introduction to Trademark Searching Using DialogWeb

### Toronto, Canada

- 5/19 Introduction to DialogWeb—Command
- 5/20 Chemistry for Non-Chemists
- 5/20 Introduction to Dialog DataStarWeb
- 6/8 Company Intelligence
- 6/9 Market Intelligence
- 6/17 Introduction to Dialog DataStarWeb
- 6/18 Using DIALINDEX: Finding the Right Database(s)
- 6/29 Chemistry for Non-Chemists
- 6/30 Introduction to DialogWeb—Command

### Beijing, China

- 6/8-10 Basic Seminar
- 6/8-11 Basic & Chemical Seminar
- 6/8-16 Patent Seminar
- 7/6-8 Basic Seminar

## U.S. Web-Based Training

For more information or to register for any of the following national U.S. Web-based classes, visit our Web site at [www.dialog.com/training](http://www.dialog.com/training).

- 5/10 Getting Started on DialogSelect
- 5/11 Introduction to Dialog Featuring DialogClassic
- 5/11 Chemical Information on Dialog
- 5/11 Getting Started on Dialog DataStarWeb
- 5/12 Getting Started on Dialog NewsEdge
- 5/12 Searching Trademarks Using DialogWeb—Guided
- 5/12 Getting Started on DialogWeb—Guided
- 5/13 Forgotten Commands & Features on Dialog
- 5/13 Getting Started on Dialog Billback
- 5/13 Getting Started on Dialog1
- 5/13 Getting Started on Dialog NewsRoom
- 5/13 Getting Started on Dialog Profound
- 5/17 Getting Started on DialogWeb—Command
- 5/17 Getting Started on Dialog Profound
- 5/18 Patent Research Basics Featuring DialogClassic
- 5/18 Basic Skills Review for Classic Dialog Searchers
- 5/18 Introduction to Dialog Featuring DialogClassic
- 5/19 Getting Started on DialogSelect
- 5/19 Searching MEDLINE Using DialogClassic
- 5/20 Getting Started on DialogWeb—Command
- 5/20 Getting Started on Dialog NewsEdge
- 5/20 Getting Started on Dialog Profound
- 5/24 Getting Started on DialogWeb—Guided
- 5/25 Introduction to Dialog Featuring DialogClassic
- 5/25 Getting Started on Dialog1

continued from page 9

## New on Dialog DataStar

### Chronolog®

The *Chronolog*  
(ISSN 0163-3732) is  
published by:

#### Dialog

11000 Regency Parkway,  
Suite 10  
Cary, North Carolina  
27511 USA

1.919.462.8600 or  
1.800.334.2564

Fax: 1.919.468.9890

Please address any  
comments or questions to  
[chronolog@dialog.com](mailto:chronolog@dialog.com)

DIALOG, DIALINDEX, DIALOG  
OnDisc, DialogLink, DIALORDER,  
First Release, OneSearch, ONTAP  
and PROFOUND are registered  
trademarks of The Dialog  
Corporation in the U.S. Patent and  
Trademark Office and in other  
jurisdictions. Chronolog, DataStar,  
DIALOG Headlines, DIALOG  
Homebase, DIALOGSelect,  
SourceOne and SitePrints are  
trademarks of The Dialog  
Corporation. All other brand and  
product names are trademarks of  
their respective owners. The  
contents of this publication are not  
copyrighted and may be freely  
reproduced.

W-301007/4-04

## OldMedline, 1951-1965, Now on Dialog DataStar

Over 1.5 million OldMedline citations covering the years 1951-1965 have been added to Dialog DataStar. The data is available in its own database ME65 but can also be searched as part of MEZZ. The OldMedline indexes provide online access to material that would previously have been difficult to track unless you have a full set of printed MEDLINE indexes at your disposal.

OldMedline citations were created using standards that are different from the data entry standards for MEDLINE records. They lack the accumulated changes and improvements that have been made to data in other National Library of Medicine (NLM) files during annual reloads. Refer to the NLM Technical Bulletin at [www.nlm.nih.gov/pubs/techbull/so03/so03\\_oldmedline.html](http://www.nlm.nih.gov/pubs/techbull/so03/so03_oldmedline.html) for further information about the changes between MEDLINE and OldMedline. It is expected that OldMedline will become available on Dialog later in 2004.

## Embargo Lifted on F-D-C Reports (File 187/FDCR)

F-D-C Reports provides up-to-date information about the worldwide healthcare industry in their well-known newsletters: *The Pink Sheet* (Prescription Pharmaceuticals and Biotechnology), *The Tan Sheet* (Nonprescription Pharmaceuticals and Nutritionals) *The Gray Sheet* (Medical Devices, Diagnostics and Instrumentation), *The Rose Sheet* (Toiletries, Fragrances and Skin Care) and *The Blue Sheet* (Health Policy and Biomedical Research).

F-D-C Reports (File 187/FDCR) will no longer be subject to the previous three-week embargo. Rather, F-D-C Reports will update as information becomes available on both Dialog and Dialog DataStar. The price for a fulltext record will be US\$15. F-D-C Reports data older than three weeks will be available in two new archive files: File 186 on Dialog and FDCA on Dialog DataStar. The full record price for these files is US\$5.50. Please note that there is no Alerts capability in the archive files (File 186, FDCA). Customers who want to run Alerts on F-D-C Reports must use Dialog File 187 or Dialog DataStar FDCR.

Site licenses to individual newsletters within F-D-C Reports are now also available on Dialog, Dialog DataStar and Dialog NewsEdge. Contact your account manager for more information.

### Dialog

11000 Regency Parkway, Suite 10  
Cary, North Carolina 27511 USA