

3 Dialog Intellectual Property Collection Continues to Grow

4 From Chemical Structure to Fulltext Patent

6 Dialog—The One-Stop Solution for Intellectual Property Research

8 Dialog eLinks: Accessing Library Holdings

**NOTICE:**

Please review the changes to *Chronolog* on page 2.

THOMSON  
DIALOG

## Dialog Strengthens Sci-Tech Collection With Addition of CSA Databases

Dialog is strengthening its already stellar sci-tech collection with Cambridge Scientific Abstracts (CSA) files. The content from CSA includes more than six million records in over 30 databases of subject-specific research, expanding Dialog's already extensive collection of scientific and technical databases. These collections of research focus on materials science, high tech, engineering, aerospace, computer sciences, life sciences, environmental and aquatic sciences, and social and library sciences. The new content also adds databases not previously available through Dialog, covering solid state technology, superconductivity, earthquake engineering and other topics.

CSA databases recently added for research and document retrieval through Dialog are METADEX®, Aerospace and Technology Database, and the mega-file Technology Research Database (TRD), all with detailed abstracts. Additional CSA databases will be loaded on Dialog throughout 2005.

### METADEX, a Metals Science Database

METADEX (File 32) is the premier database of research covering metals and alloys, including their properties, manufacturing, applications and new product development. Research is gathered from more than 2,000 journals, plus patents, dissertations, government studies, conference proceedings, technical reports and books. The METADEX database includes over one million references.

### Aerospace and Technology Database

The Aerospace and Technology Database (File 108) provides coverage of basic and applied research in aeronautics, astronautics and space sciences in over 40 countries including Japan and eastern European nations. The database also covers technology development and applications in such complementary and supporting fields as chemistry, geosciences, physics, communications and electronics. The research includes articles and reports from periodicals and scholarly journals, plus research published by NASA, other U.S. government agencies, international institutions, universities and businesses.

### Technology Research Database (TRD)

Technology Research Database (File 23), a new CSA database to Dialog covering 1962 to the present, provides a single mega-file of all the unique records available through its components: the CSA Materials Research Database with METADEX, CSA High Technology Research Database with Aerospace and the CSA Engineering Research Database. The database content represents the most comprehensive and current coverage of relevant serial and non-serial literature available. Sources covered include over 4,000 periodicals, conference proceedings, technical reports, trade literature, patents, books and press releases. The file provides a wealth of topics ranging from Aeronautics and Astronautics to civil, earthquake, transportation and environmental engineering to electronics to meteorology, climatology and oceanography, as well as metallurgy and intermetallics, to name a few.

With the addition of the CSA information, Dialog significantly expands its portfolio of scientific and technical research. David Brown, General Manager Dialog DataStar, commented, "In a number of critical research areas, such as materials science, engineering, electronics and life sciences, Dialog will soon have what are clearly the best-in-class research files available anywhere."

Access to these three CSA databases is limited to subscribers. Consult the information at [www.dialog.com/csa/](http://www.dialog.com/csa/) for details. See the online version of *Chronolog* to view a sample record.

For more information see the online story at [support.dialog.com/publications/chronolog/200505](http://support.dialog.com/publications/chronolog/200505)

## TABLE OF CONTENTS

## COMPANY UPDATE

From the Editor	2
New Chronolog Schedule and Expanded Newsletter Options	2
Receive Latest News About Dialog Through RSS	2
Trade Shows	3
Training Schedule	11

## NEW ON DIALOG

Dialog Strengthens Sci-Tech Collection With Addition of CSA Databases	1
Dialog Intellectual Property Collection Continues to Grow	3
DialogLink 5 Enhancements	3
From Chemical Structure to Fulltext Patent	4
Dialog—The One-Stop Solution to Intellectual Property Research	6
Images Added to German Patents Fulltext	6

NEW ON DIALOG AND  
DIALOG DATASTAR

Dialog eLinks: Accessing Library Holdings	8
Dialog Alerts Enhancements	8
New Thesaurus Available With Food Science and Technology Abstracts on Dialog	8
MEDLINE® Reload Completed on Dialog and Dialog DataStar	9
ToxFile® Reloaded on Dialog and Dialog DataStar	9

continued on page 3

## FROM THE EDITOR

You read about DialogLink 5 in the March/April *Chronolog*. Now it's here and you can take advantage of the many new, exciting features designed to enhance the role of the information professional. Download the revolutionary software right away from the Dialog Web site at [www.dialog.com/getdl5](http://www.dialog.com/getdl5). In this issue, you will read in more detail about DialogLink 5 including Chemical Structure Searching (CSS), linking capabilities between the Derwent Chemistry Resource file and Derwent World Patents Index and new training sessions to familiarize you with the new DialogLink 5 features.

The scope of *Chronolog* has changed. Beginning with this issue, *Chronolog* will now focus exclusively on the Dialog and Dialog DataStar services. News about Dialog Profound, Dialog NewsRoom, Dialog NewsEdge and Dialog Intelliscope will appear in separate communications. We believe this editorial refocus will better serve your needs and interests.

Don't forget to sign up now to receive the eChronolog at [support.dialog.com/enewsletters/echronolog/subscribe/](http://support.dialog.com/enewsletters/echronolog/subscribe/). You will receive an annotated Table of Contents with links to all of the articles right in your mailbox.

## COMPANY UPDATE

## New Chronolog Schedule and Expanded Newsletter Options

To better serve the needs of our customers, Dialog is expanding its e-newsletter offerings. The print version of the *Chronolog* will be published once more in 2005, for a total of four issues. These hard-copy issues will be supplemented by regular electronic updates to keep you informed of developments on Dialog and DataStar. In addition, we are pleased to announce new topical newsletters, designed to address your specific communities of interest, such as intellectual property, pharmaceutical/biotech, competitive intelligence, and aerospace/defense. These subject-specific newsletters will be delivered electronically and you may subscribe to as many as you like, free of charge.

Please go to: [www.dialog.com/enewsletters/](http://www.dialog.com/enewsletters/) to indicate your areas of interest and subscribe to topical newsletters and/or general updates on Dialog and DataStar.


## Receive Latest News About Dialog Through RSS

Dialog recently began delivering its press releases through a new distribution channel, known as Really Simple Syndication (RSS), which is an XML-based format used for syndicating Web-based content. The new Dialog Corporate News RSS feed, which can be found in the Dialog pressroom, allows you to be instantly informed of the latest Dialog company news.

RSS is a medium that continues to grow in popularity among Internet users, as it allows users more control over the news they receive and they can receive it all in one location. Many news outlets and other organizations are increasing their use of RSS as an additional way to distribute their content.

To receive Dialog's Corporate News RSS feed, you must first sign up for an RSS reader, also called a news reader or news aggregator. Many RSS readers are free and are available as Web-based or desktop applications.

Once you have an RSS reader:

1. Go to the Dialog pressroom at [www.dialog.com/pressroom/](http://www.dialog.com/pressroom/) and locate the orange and white RSS icon  on the right side of the page.
2. Right-click the RSS icon and select **Copy Shortcut** from the pop-up menu.
3. Go to your selected RSS reader and follow the instructions for adding an RSS feed to your RSS reader. RSS readers vary in how users add RSS feeds. Typically, you will paste the copied URL into a field within the RSS reader.

## NEW ON DIALOG

## Dialog Intellectual Property Collection Continues to Grow

Dialog continues to enhance its comprehensive intellectual property collection with the additions of Mexican trademarks and Indian patents.

## MEXICAN TRADEMARKS JOIN THE DIALOG TRADEMARK COLLECTION

TRADEMARKSCAN®—Mexico (File 668) has been added to the family of trademark databases on Dialog. North America trademark coverage now includes all major countries—the United States, Canada and Mexico. The database contains approximately 500,000 trademark applications and registrations and will continue to grow.

The new Mexican trademark file, provided by Thomson CompuMark and covering 1976 to the present, is similar in design to other Dialog trademark files, so you can search the file individually or using OneSearch categories (NATMKS, TMKAMER or TMKS). The Goods and Services (/GS) field is fully searchable in both English and Spanish. Images are also available in this file.

Use Dialog trademark databases to screen a new mark, conduct due diligence or review a trademark portfolio for maintenance and infringement. Search trademarks using words in the mark or the powerful Rotated Trademark index (TR=). Locate trademark owners, view images of the mark and see what trademarks are in the same class. Dialog indexing enables you to pinpoint your search to find meaningful results quickly.

## INDIA PATENT DATA AVAILABLE IN DERWENT WORLD PATENTS INDEX®

All Indian patent documents, both pre-grant applications and granted patents, issued since the new Indian patent laws came into force on December 4, 2004, will become available over the coming weeks in Derwent World Patents Index® (DWPI) (File 351).

Ongoing, you will be able to access documents within two weeks from publication in Derwent World Patents Index First View<sup>SM</sup> (File 331) and within 4-6 weeks in DWPI.

The addition of Indian patent data means you can now access value-added patent information from 41 patent-issuing authorities—giving you more comprehensive coverage of worldwide patents than ever before.

## Enhancements to DialogLink 5

Several new enhancements to DialogLink 5 let you create Custom E-mail Alerts with a Table of Contents, conduct chemical structure searching in additional drug pipeline databases and set up reports with new ready-made templates.

- ▶ **Alerts customization.** Tailor Custom E-mail Alerts to only the fields you're interested in and include a hyperlinked Table of Contents in the beginning for easy navigation to records of interest. Additionally, the "Custom E-mail Alerts Previewer" is now available in the Reports tab, allowing you to test Alert output.
- ▶ **New Chemical Structure Searching databases.** Chemical Structure Searching is now available in other drug pipeline databases: Prous Science Drug Data Report (File 452), IMS R&D Focus (File 445), and Prous Science Drugs of the Future® (File 453), which has resumed updating.
- ▶ **Expanded Template selection.** More templates for creating Word and Excel reports have been added to DialogLink. Click the Get Templates button in the Reports tab to download templates for Derwent and FDAnews and see other new templates as they are added in biomedical, intellectual property and news categories.
- ▶ **Multiplatform utility.** Telnet Session Access to Classic DataStar and STN. (See story on page 10.)

Table of Contents  
continued

Dialog NewsRoom  
Extends Archive 9

Ei Compendex® 1990-  
To-Date Dataset Now  
Available 9

CorpTech®: U.S. High  
Tech Company Profiles 9

## NEW ON DIALOG DATASTAR

DialogLink 5 Now  
Provides Access to Dialog  
DataStarClassic 10

ERIC Comes to  
Dialog DataStar 10

## TIPS AND TECHNIQUES

Visual Rank in  
DialogLink 5 4

Customizing the  
EXPAND Command  
in DialogLink 5 5

Searching the Rotated  
Trademark Index 6

Pharmaprojects Target  
Gene Information 7

Descriptor Terms  
in EMBASE® 10

Hints When Using  
Dialog DataStarWeb 10

## TRADE SHOWS

July 4-6  
Association of Information  
Officers in the Pharmaceutical  
Industry (AIOPI)  
2005 Conference  
Bournemouth, United Kingdom

July 16-20  
American Association of  
Law Libraries (AALL)  
Annual Meeting 2005  
San Antonio, Texas

August 28-September 1  
American Chemical Society  
Meeting & Exposition 2005  
Washington, D.C.

## NEW ON DIALOG

## SEARCH TIP

VISUAL RANK IN  
DIALOGLINK 5

Ranking and exporting files into Microsoft® Excel has just gotten easier with DialogLink 5! Create a set of information you want to rank (e.g., author names, sales data). From the DialogLink 5 Set Links pane on the right hand side of the Retrieve Buffer, click the set you just created. From the drop-down menu, select **Tasks > Rank** from the list of options. From the pop-up box that displays, select one field (e.g., AU, PY, JN, etc.) to rank. The Rank list will display in a separate window. You can now select all entries and click **Excel File** to create an Excel document to be saved and sorted as usual.

Jamie Lamkin  
Knowledge Center

## From Chemical Structure to Fulltext Patent

It's as easy as 1-2-3. Even though you may not be a chemist, DialogLink 5 makes searching for a chemical structure and finding the corresponding patent quick, easy and affordable. You need two things: DialogLink 5 installed on your computer (free from [support.dialog.com/dialoglink](http://support.dialog.com/dialoglink)); and a chemical structure drawing in a .MOL file. Saving to .MOL format is an option in most chemical structure drawing packages. **Note:** If you draw your own chemical structures, DialogLink 5 supports most drawing packages, so you can draw your own structure and continue with the process as outlined.

In this illustration, you will use two Dialog databases: Derwent Chemistry Resource (DCR) (File 355) and Derwent World Patents Index (Files 350, 351, 352).

- ▶ DCR cites chemical structures from more than one million patents dating back to 1981 within Sections B, C and E (Pharmaceuticals, Agrochemicals and General Chemistry) of Derwent World Patents Index. File 355 contains DCR numbers that uniquely identify each chemical structure. These numbers can be used to search Files 350, 351 and 352.
- ▶ Derwent World Patents Index provides access to information from more than 22.9 million patent documents from 41 patent-issuing countries.

Here's how it works.

1. Begin your search in Derwent Chemistry Resource (DCR) (File 355), type CSS to go directly to your folder with saved molecular drawing files (.MOL), and select the one you want to search, in this example "curcumin."

**Note:** You will be asked to select the search type; in this example search all substructures for a broader search.

2. TYPE one of the records; click Links at the top of the record to link to the appropriate Derwent World Patents Index file from the drop-down menu (Figure 2).

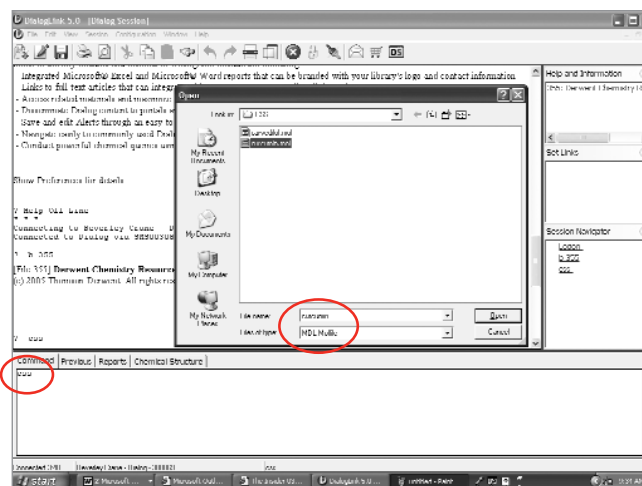


Figure 1

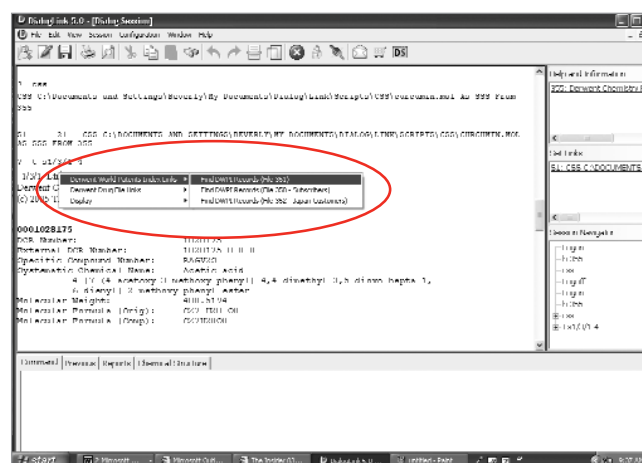


Figure 2

- Click the set number in the Set Links pane from which you want to order patents from the Thomson Patent Store. (Figure 3)

If the patent is available in Adobe Acrobat® PDF format, you can click the patent number to display it. You may have patents e-mailed to you, instead, by clicking the checkbox next to the patent(s) of interest. (Figure 4)

You have just used a chemical structure to find a patent based on that structure. Simple, fast, low cost!

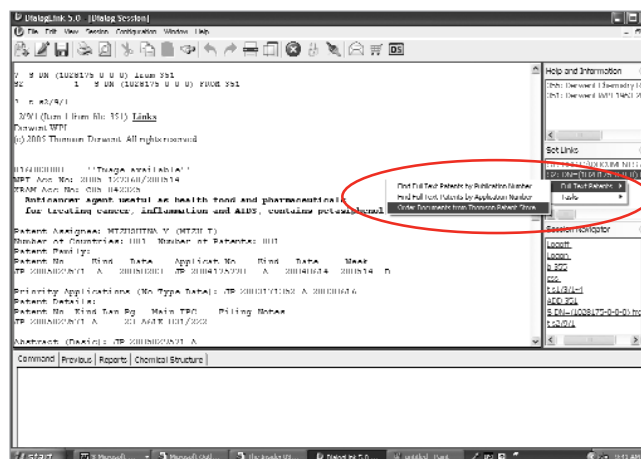


Figure 3

### Thomson Patent Store

The following patents are available. Please select the ones you want and place your order.

For more information on costs, please see the [Pricing](#) page.

Patent Number	Number of Pages
<input type="checkbox"/> Select All/None	
<input type="checkbox"/> <a href="#">EP 1021087 A0</a>	n/a
<input type="checkbox"/> <a href="#">EP 1021087 A4</a>	
<input type="checkbox"/> <a href="#">EP 1028705 A0</a>	
<input checked="" type="checkbox"/> <a href="#">EP 1028705 B1</a>	
<input type="checkbox"/> <a href="#">EP 1063987 A0</a>	
<input type="checkbox"/> <a href="#">WO 1999017612 A1</a>	
<input type="checkbox"/> <a href="#">WO 1999024009 A1</a>	
<input type="checkbox"/> <a href="#">WO 1999042101 A1</a>	
<input type="checkbox"/> Select All/None	



Europäisches Patentamt  
European Patent Office  
Office européen des brevets



(11) **EP 1 028 705 B1**

(12) **FASCICULE DE BREVET EUROPEEN**

(45) Date de publication et mention de la délivrance du brevet: 05.09.2001 Bulletin 2001/36

(51) Int. Cl. 7: A61K 7/48

(21) Numéro de dépôt: 98954536.3

(86) Numéro de dépôt international: PCT/FR98/02982

(22) Date de dépôt: 06.11.1998

(87) Numéro de publication internationale: WO 99/24009 (20.05.1999 Gazette 1999/20)

(54) UTILISATIONS DU D-XYLOSE, DE SES ESTERS ET DES OLIGOSACCHARIDES CONTENANT DU XYLOSE POUR AMELIORER LA FONCTIONNALITE DES CELLULES DE L'EPIDERME  
VERWENDUNG VON D-XYLOSE, DEREN ESTERN UND VON XYLOSE ENTHALTENDEN OLIGOSACCHARIDEN ZUR VERBESSERTUNG DER FUNKTIONALITÄT VON EPIDERMALZELLEN  
USES OF D-XYLOSE, THE ESTERS THEREOF AND OLIGOSACCHARIDES CONTAINING XYLOSE FOR IMPROVING THE FUNCTIONALITY OF EPIDERMAL CELLS

(84) Etats contractants désignées: DE ES FR GB IT	- BONTE, Frédéric F-45100 Orléans (FR)
(30) Priorité: 07.11.1997 FR 3714023	(74) Mandataire: Giraud, Françoise et al Cabinet Beau de Lomenie 158, rue de l'Université 75340 Paris Cedex 07 (FR)
(43) Date de publication de la demande: 23.08.2000 Bulletin 2000/34	(56) Documents cités: CH-A- 368 267 CH-A- 642 851
(73) Titulaire: LVMH RECHERCHE 75008 Paris (FR)	

Figure 4

## SEARCH TIP

## CUSTOMIZING THE EXPAND COMMAND IN DIALOGLINK 5

In DialogLink 5, the default number of lines that displays when you enter the EXPAND command is 50. If you prefer that fewer lines display, you can change the number of lines by modifying your search preferences.

- If you are logged on to the system, log off.
- Select **Configuration > Settings** to display the Searchers, Projects and Clients window.
- Highlight the user name and ID for which you want to specify Preferences and click **Edit**. The Edit Searcher window displays.
- Click **Preferences** to display the Set Preferences window.
- In the text box labeled **Expand Items**, the number 50 appears as the default. Change the text to display the number of EXPAND lines preferred.
- Click **OK** to save your Preference settings. The Edit Searcher window displays.
- Click **OK**. The system displays the Searcher, Projects and Clients window.
- Highlight the entry for the Preferences modified.
- Click **Default** or **Current** to save the Preference setting and log on.

## NEW ON DIALOG

## Images Added to German Patents Fulltext

Images from 1994 to 2005 have been added to German Patents Fulltext (File 324). Full record is US\$7.90 with image. Without image full record price is US\$7.50. For more information, please see the Bluesheet.

### SEARCH TIP

#### SEARCHING THE ROTATED TRADEMARK INDEX

A unique feature of the TRADEMARKSCAN® files is the Rotated Trademark Index (TR=), which allows you to search a string of letters as either a whole word, a prefix, a mid-word string, or a suffix.

Combining the Rotated Trademark Index with the @ sign lets you further refine your search to retrieve a string of letters as a whole word or suffix only. Remember: You must always use the “?” after the search term when using the TR= prefix, otherwise you will generate zero results.

Mary Kay McDonald  
Knowledge Center

## Dialog—The One-Stop Solution for Intellectual Property Research

Whether you need a preliminary trademark screening, a European patent in fulltext, legal status or patent family information, or data to help in a patent litigation case, Dialog provides an unrivaled solution for your intellectual property research needs. Dialog is the online service of choice for the largest intellectual property firms in the world. The reasons are many:

### ► unrivaled content

The Dialog intellectual property collection includes more than 50 million patents covering 70 patenting countries and authorities and 19 million trademarks from 26 trademarking countries around the world. Data comes from the most authoritative providers, such as the World Intellectual Property Organisation, U.S. Patent & Trademark Office, European Patent Office, Derwent, Thomson CompuMark and IFI/Plenum.

### ► unrivaled convenience

Dialog gathers patent and trademark information from around the world into a single collection, consistently indexed and formatted. With a choice of interfaces, including off-the-shelf or customized to your exact requirements, intellectual property information is provided the way you need it. Services include automatic notification (Alerts), delivery in XML and other formats for easy integration into other applications, trademark design images, fulltext patents in PDF, patent families with equivalents in English and other languages, legal status, and much more—all from a single service!

### ► unrivaled search tools

For more than 30 years, Dialog has been the premier online service for professional researchers. It provides thorough indexing of intellectual property data joined to precision tools for fast, accurate and comprehensive retrieval of intellectual property and prior art, with additional tools for analysis, and a choice of output formats.

### ► unrivaled support

Academic credentials, professional experience, and daily research challenges from our customers have honed the expertise of our intellectual property experts to world-class standing. That expertise is available to Dialog customers at no charge. Training is also available at no charge.

### CONTENT HIGHLIGHTS

- *Worldwide patents.* Fulltext patents are available globally in European Patents Fulltext (File 348), U.S. Patents Fulltext (Files 654, 652) and WIPO/PCT Patents Fulltext (File 349). Moreover, translations of German patents from German Patents Fulltext (File 324) are provided. The collection also includes patents from different countries including Japan (File 347), France (File 371), and China (File 344). In addition, the Thomson Patent Store lets you order the fulltext of patents and receive them quickly via e-mail.
- *Specialty patent files.* Comprehensive coverage of patents related to the petroleum and energy industries in Ei EnCompassPat™ (File 353) and IMS Patent Focus (File 447), focusing on over 1,000 commercially significant drugs, provide complementary patent data in specialized fields.
- *Special applications.* Finding a patent family is easy in INPADOC®/Patent Family and Legal Status (File 345) and Derwent World Patents Index (Files 350, 351, 352). Moreover, U.S. legal status information is available in CLAIMS®/Current Patent Legal Status (File 123) and U.S. Patents Fulltext (File 654) and worldwide in INPADOC/Family and Legal Status (File 345).
- *Preliminary trademark screening.* TRADEMARKSCAN databases for the United States, Canada, Japan and 22 European countries, such as Austria, Denmark, the United Kingdom and Ireland, and the new addition—Mexico—serve as preliminary trademark screening tools for checking the availability of new product and service names.
- *U.S. Patent Litigation.* Files like LitAlert® (File 670) for patent and trademark infringement lawsuits and Domain Names (File 225), which contains current and historic ownership records of Internet domain names, add to the versatility of the Dialog collection.

continued on page 7

continued from page 6

INTELLECTUAL PROPERTY SEARCHING

Dialog has thorough indexing, special features and a new easy-to-use interface in DialogLink 5 to make patent searching fast and affordable.

► *Similar file structure and indexing for easy searching*

Trademark and patent files are structured similarly for easy cross-file searching. Search trademarks using words in the mark or the powerful Rotated Trademark index (TR=). Locate trademark owners (OW), view images of the mark and see what trademarks are in the same class (IC). Search a patent or application number consistent across all available issuing authorities. Dialog indexing enables you to pinpoint your search to find meaningful results quickly.

► *Convenient groupings using DIALINDEX®/OneSearch®*

Dialog DIALINDEX/OneSearch categories group trademarks according to geographic region. You can search all trademarks in Europe (EUROTMKS), North America (NATMKS) or the entire collection (TMKS). Patent categories also include PATSTAT for post-issuance legal status, OILPAT for petroleum and energy patents and PATWORLD for worldwide patents.

► *DialogLink 5 seamless linking*

DialogLink 5 contains record and set links making it possible to link to fulltext patents, order documents from the Thomson Patent Store, compile a patent family and link to U.S. or international legal status. For example, using the publication number, you can link to U.S. current legal status in CLAIMS® (File 123) as in Figure 1.

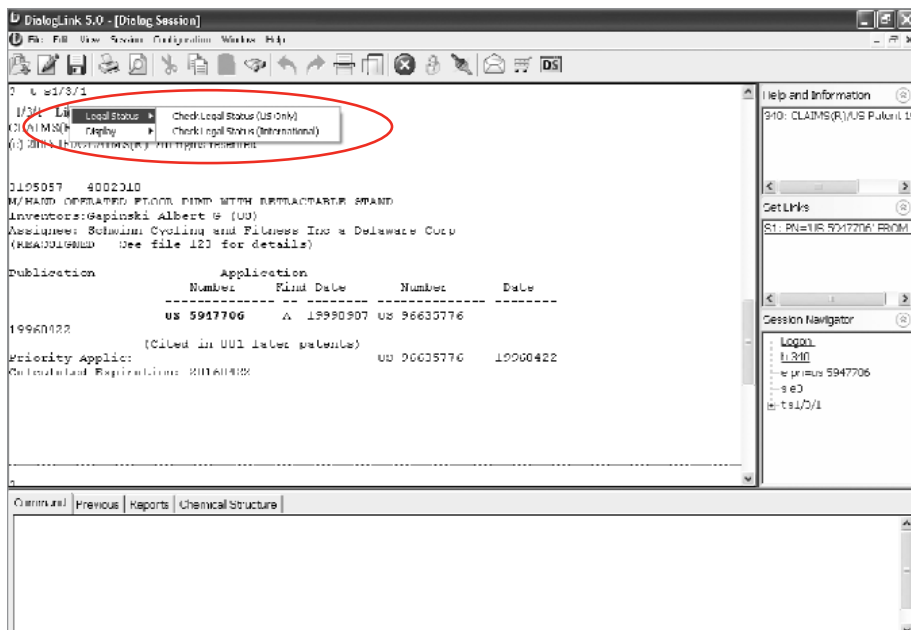


Figure 1

Or, in the Set Links pane on the right side of the Retrieve buffer, click the set number for your Alert, click "Tasks" to save the Alert as in Figure 2.

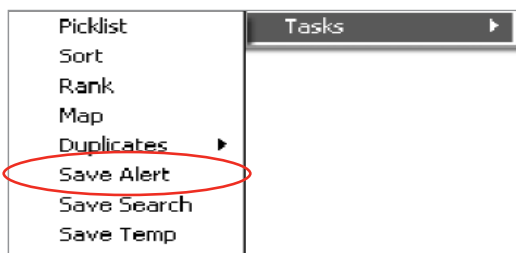


Figure 2

SEARCH TIP

PHARMAPROJECTS TARGET GENE INFORMATION

As part of the latest reload to Pharmaprojects (File 128), all records now contain a Target Data field. In more than half of these records, the Target Data field contains a link that takes you to the Entrez Gene database from the U.S. National Center for Biotechnology Information (NCBI). The link connects to an entry in the database for the gene whose product is targeted by the drug of record.

For the remaining records, the Target Data field is populated by one of three new codes. The three definitions for the new codes are:

- 99999997: drugs that have a known target, but for which there is no gene entry in the Entrez Gene database
- 99999998: drugs that have no target
- 99999999: drugs that have an unknown target

continued on page 12

## NEW ON DIALOG AND DIALOG DATASTAR

## Dialog Alerts Enhancements

▶ Dialog Alerts are now available in XML format on Dialog, in addition to ASCII text, TAG and HTML formats. Alerts in XML are delivered electronically and can be used for easy integration into other applications, including portal feeds and DialogLink 5 Microsoft® Word and Excel reports. Where available, Alerts delivered in XML format include Dialog eLinks. Use PRINT command syntax to set up the Alert:

Print s1/full/all XML addr MYEMAIL

▶ You can now create Alerts and saved searches (SearchSaves®) with names up to 40 characters long instead of the previous character limit of eight (8). The only restrictions are that the name include at least one letter and contain no special characters, including spaces and symbols.

## New Thesaurus Available With Food Science and Technology Abstracts on Dialog

The latest edition of the FSTA thesaurus is now available in File 51. The thesaurus has been brought up to date with more than 1,200 new terms and now contains a total of 9,827 terms. In addition to the increase in size, Scope Notes, Historical Notes and Use History have also been added. These are referenced as “S” type terms in the online thesaurus. Refer to the Bluesheet for more information.

## Dialog eLinks: Accessing Library Holdings

You can now add your own library collection or collections with which your organization has an access agreement to the Dialog and Dialog DataStar eLinks Manager. Previously, information about journal holdings was only available through a custom solution or an OpenURL system.

The Dialog eLinks Manager has been updated to include five tabs that reflect options available—Public Publisher, Library Holding, Open URL, Custom URL and eLinks Filter (Figure 1). Additionally, some organizations may have a custom linking option.

Organizations may access various libraries in different locations. They can define each library and upload the appropriate journal and book list in a defined Microsoft® Excel format. The administrator can define the name, address, opening hours and comments for each library.

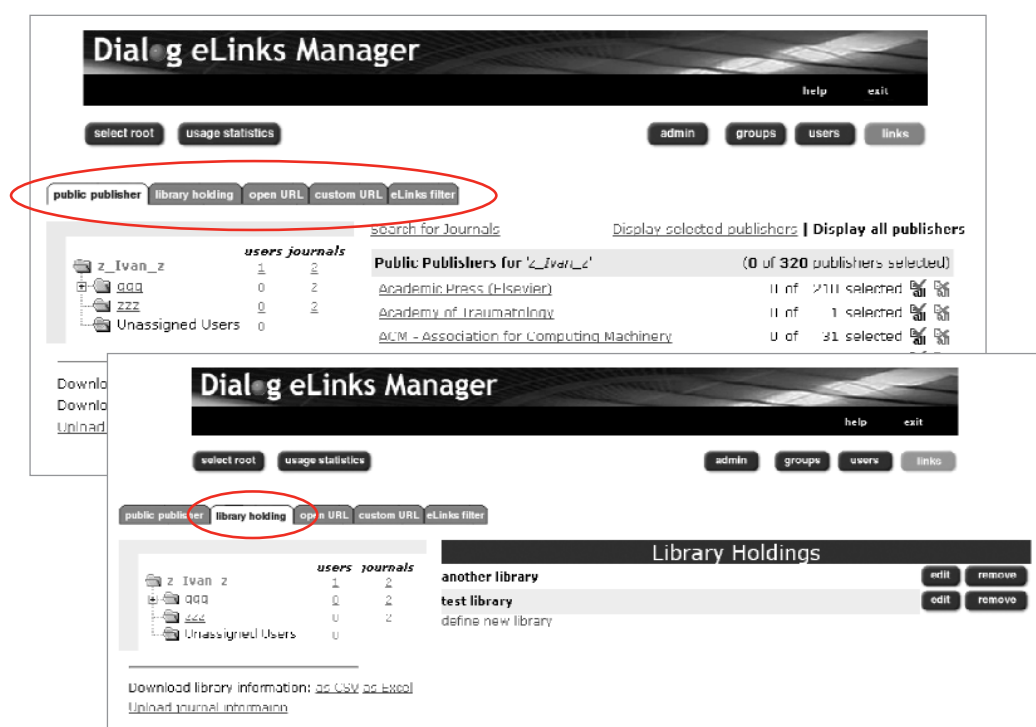


Figure 1

For the link shown in the documents, the administrator can define an image and its location, as well as the exact location of each journal or book and any other information required. This information will then be displayed together with the library information under the links coming with the documents.

## APPROPRIATE COPY ENHANCEMENT ON DIALOG ELINKS

Dialog eLinks now allows users of the eLinks Manager to define how and when links should appear in documents. Using the options under the eLinks Filter tab, users can control if several links should be displayed together and the priorities of links.

## NEW ON DIALOG AND DIALOG DATASTAR

## MEDLINE® Reload Completed on Dialog and Dialog DataStar

The reload of MEDLINE (Files 154/155; MEDL/MEZZ) on Dialog and Dialog DataStar was completed in February. MEDLINE is reloaded every year because the National Library of Medicine (NLM) re-indexes relevant documents from the whole database with changed medical terms.

Generally, the NLM does not retrospectively index MEDLINE citations with new MeSH® headings. Therefore, searching for a new MeSH term effectively limits retrieval to citations indexed after the term was introduced. However, changed or deleted terms are usually applied to the whole database during the NLM's end-of-year processing. For example, "Acanthoma" is a new MeSH heading introduced in 2005. If you search it as a descriptor, you will only retrieve documents from 2005 onwards; earlier documents on this subject were indexed with the term "Skin Neoplasms" and have not been changed. On the other hand, the MeSH term "Myocardial Diseases" in MEDLINE citations indexed from 1966–2004 has been changed to "Cardiomyopathies" in 2005.

Major changes are described in the online *Chronolog*; however, we strongly urge you to read the National Library of Medicine's comprehensive articles: "What's New for 2005 MeSH" and "Medline Data Changes – 2005," both at the NLM's Web site at [www.nlm.nih.gov/pubs/techbull/nd04/nd04\\_issue\\_cover.html](http://www.nlm.nih.gov/pubs/techbull/nd04/nd04_issue_cover.html).

For more information see the online story at [support.dialog.com/publications/chronolog/200505](http://support.dialog.com/publications/chronolog/200505)

## ToxFile Reloaded on Dialog and Dialog DataStar

The ToxFile (File156/TOXL) reload on Dialog and Dialog DataStar took place soon after the MEDLINE reload. ToxFile is reloaded because a large proportion of documents in that file are derived from MEDLINE, which is reloaded every year.

If you extensively use the National Library of Medicine's (NLM) Medical Subject Headings (MeSH) for your ToxFile searches, you need to familiarize yourself with the 2005 MEDLINE changes (See MEDLINE story for further details).

Please note that not all records in ToxFile contain MeSH headings. Some of the NLM's partner organizations that contribute documents to ToxFile do not use MeSH. To ensure comprehensive subject retrieval in ToxFile, use a mixture of MeSH and free text.

## Dialog NewsRoom Extends Archive

Each year Dialog and Dialog DataStar add databases containing the previous year's records to the Dialog NewsRoom archive. On Dialog DataStar, 2005 articles are being added to the new NE05 database. NEWD continues to hold the current day's stories and NEWS the current 3-4 months of stories. On the Dialog service, a new database has been added (File 996) and years of coverage have changed for existing databases (Files 989–995). The following table shows current coverage for each segment of Dialog NewsRoom on Dialog. The change was made to ensure that the most recent data always displays first when searching more than one file (OneSearch).

File Number	Dialog New Coverage	Dialog Former Coverage
989	Current 7 days	Current 7 days
990	Current 3-4 months	Current 3-4 months
991	2005	2004
992	2004	2003
993	2003	2002
994	2002	2001
995	2001	2000
996	2000	—

## Ei Compendex® 1990-To-Date Dataset Now Available

Ei Compendex® (File 8) has been split into two files. The new File 288 contains Ei Compendex data from 1990 to the present. File 8 will continue to include coverage from 1970 to the present. The design of File 288 is identical to that of File 8, using the same indexing and display options. Additionally, the Alert default frequency for Files 8 and 288 is changing from monthly to weekly for all new Alerts created on and after May 1, 2005. The default frequency for Alerts created prior to May 1 will remain monthly. Allowed frequencies will be weekly and monthly.

## CorpTech®: U.S. High-Tech Company Profiles

The CorpTech Directory of Technology Companies resumes updating on Dialog as File 559. The database contains details for more than 95,000 companies and 285,000 executives in 17 high-tech industry sectors. The data is compiled from primary research obtained from company sources to ensure current and accurate information. More than half the companies covered are not publicly traded; more than two-thirds have less than 100 employees; many are small, rapidly growing start-up firms. See the online version of *Chronolog* for more information and a sample record.

For more information see the online story at [support.dialog.com/publications/chronolog/200505](http://support.dialog.com/publications/chronolog/200505)

## NEW ON DIALOG DATASTAR

## SEARCH TIP

DESCRIPTOR TERMS  
IN EMBASE

In EMBASE®, you may come across some terms in the DE paragraph marked with a plus sign (+). These are considered candidate terms—terms that have been identified by EMBASE indexers as new concepts that are not present in Emtree (e.g., disease terms and names of new drugs). Candidate terms are reviewed annually by the database provider and between 500 and 1,500 terms are added to Emtree.

## SEARCH TIP

HINTS WHEN USING DIALOG  
DATASTARWEB

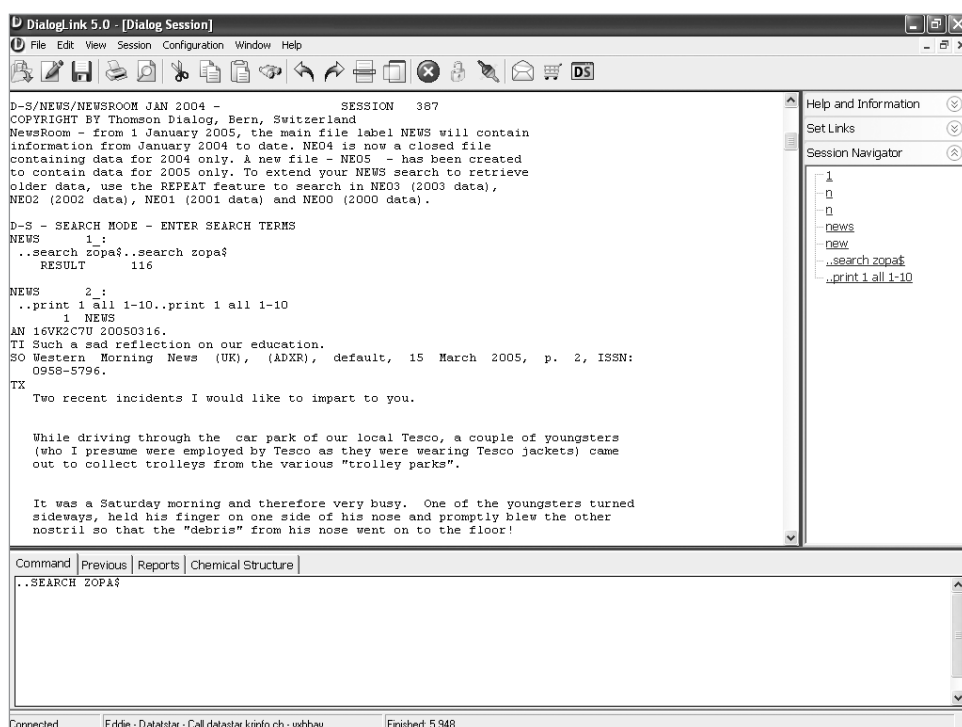
- ▶ On the Search page of Dialog DataStarWeb, you can restrict your search to information added from a particular time period forward. For example, enter: 3D (XD=day), (XM=month), (XY=year) into the “information added since” box.
- ▶ When searching in Easy Search only, instead of typing the Boolean operators, AND between two search terms, you can enter a + (e.g., Ukraine + Mobile); using OR enter a comma (e.g., Ukraine, Mobile).

LeiRae Ramirez  
Bern, Switzerland

## DialogLink 5 Now Provides Access to Dialog DataStarClassic

DialogLink 5 now provides access to the Dialog DataStarClassic system making it the single software solution for Dialog and Dialog DataStar searchers. Some of the features and benefits available for Dialog DataStar users include the following:

- ▶ Single software access for both Dialog and Dialog DataStar online services
- ▶ Session Navigator that enables users to link directly to sections in their Dialog DataStar session
- ▶ Document processing capabilities enabling Dialog DataStar output to be annotated and saved in a variety of formats including .HTML, .PDF, .DOC, .RTF and .TXT
- ▶ Dialog DataStar commands stored in a search history for quick retrieval



## ERIC Comes to Dialog DataStar

ERIC, the largest database on education in the world, has been added to Dialog DataStar (ERIC). Produced by the U.S. Department of Education's Education Resources Information Center (ERIC), it is the world's most comprehensive database covering the literature of education. More than 1.1 million records, international in scope and encompassing both research and practice, are thoroughly indexed and searchable. The database content includes citations and abstracts for journal articles, research reports, books, dissertations, instructional materials, classroom guides, reference publications, conference transcripts, and tests and questionnaires from 1966 to the present. The items for the database are carefully selected by content experts according to well-defined criteria. The database includes the contents of the no-longer-published print abstract and indexing services, Resources in Education (RIE) and Current Index to Journals in Education (CIJE). Watch for fulltext to be added to ERIC later this year. The database updates monthly with Alerts available.

## Training Schedule

Training classes on Dialog services are held throughout the world. New classes are always being added. For the most current schedule and for registration information for all locations, check the Dialog Web site at [www.dialog.com/training](http://www.dialog.com/training). Highlighted in this issue are classes in the United States.

**New Patent Research Training Series** – Attend new Web-based training sessions covering patent research. Six new sessions form an integrated curriculum, which takes the learner from the basics through advanced topics, covering the most frequently encountered tasks, techniques and sources used by patent searchers. Session titles for this new Web-based training series include: *Introduction to Patent Research* (DialogClassic); *Introduction to Patent Research* (DialogLink 5); *Researching Patent Legal Status* (DialogClassic); *Researching Patent Families* (DialogClassic); *Patent Research for Competitive Intelligence* (DialogClassic); and *Searching Prior Art for Patent Prosecution* (DialogClassic).

**Pharmaceutical Research Training Series** – Take an online class in any of the following pharmaceutical training sessions: *Introduction to Searching Pharmaceutical Information* (DialogClassic); *Introduction to Searching Pharmaceutical Information Featuring DialogLink 5*; *Competitive Intelligence for the Pharmaceutical Industry* (DialogClassic); *Drugs in Development* (DialogClassic); *Drug Topics in the Biomedical Literature* (DialogClassic); *Monitoring Drug Patents* (DialogClassic); *Tracking a Pharmaceutical Product from Discovery to Postmarketing Surveillance* (DialogClassic); and *Tracking Regulatory Milestones* (DialogClassic).

### U.S. WEB-BASED TRAINING

#### July

7/1	Getting Started on DialogWeb—Command
7/5	DialogLink 5: New Features & Functionality
7/6	Basic Skills Refresher for Classic Dialog Searchers
7/6	Getting Started on DataStarWeb
7/7	eLinks on Dialog and DataStar
7/7	DialogLink 5: Creating Reports in Word, Excel & XML
7/8	Introduction to Patent Research Featuring DialogLink 5
7/11	Searching for Specific Disease Statistics
7/11	Getting Started on DialogWeb—Command
7/12	Finding Financial Information on a European Company (DataStarWeb)
7/12	DialogLink 5: Chemical Structure Searching
7/13	Getting Started on DialogLink 5
7/13	Getting to the Facts with TableBase
7/14	Introduction to Searching Pharmaceutical Information Featuring DialogLink 5
7/14	DialogLink 5: Creating Reports in Word, Excel & XML
7/15	Forgotten Dialog Commands

7/15	Researching Patent Legal Status (DialogClassic)
7/18	Researching Adverse Effects of Drugs
7/18	DialogLink 5: New Features & Functionality
7/19	Competitive Information for the Pharmaceutical Industry
7/19	Monitoring News & Events with Alerts on Dialog DataStar
7/20	DialogLink 5: Creating Reports in Word, Excel & XML
7/20	Introduction to Command Searching on Dialog for the Patent Searcher

#### August

8/1	Getting Started on DialogWeb Command for Business Searchers
8/2	DialogLink 5: New Features & Functionality
8/2	Getting Started on DataStarWeb
8/3	Medical & Health Devices Information on Dialog
8/3	DialogLink 5: Creating Reports in Word, Excel & XML
8/4	DialogLink 5: Patent Shortcuts
8/4	Forgotten Dialog Commands
8/5	Finding Experts Using DialogWeb—Command
8/8	Introduction to Trademarks
8/9	Patent Research for Competitive Intelligence

8/9	DialogLink 5: Creating Reports in Word, Excel & XML
8/10	Introduction to Dialog for Pharmaceutical Searchers
8/10	DialogLink: New Features & Functionality
8/11	DialogLink 5: Chemical Structure Searching
8/11	Basic Skills Refresher for Classic Dialog Searchers
8/12	Getting Started on DataStarWeb for Biomedical/Pharmaceutical Searchers
8/15	Locating the Top 10 Companies in an Industry
8/16	DialogLink 5: New Features & Functionality
8/16	Finding Market Share Information on a Product
8/17	DialogLink 5: Creating Reports in Word, Excel & XML
8/17	Drugs in Development
8/18	DialogLink 5: Patent Shortcuts
8/18	Drug Topics in the Biomedical Literature
8/19	PIERS (DialogWeb—Command)
8/22	Tracking Regulatory Milestones
8/22	DialogLink 5: New Features & Functionality
8/23	DialogLink 5: Creating Reports in Word, Excel & XML

## U.S. Classroom Training

### Boston, Massachusetts

7/27	Introduction to Dialog Featuring DialogClassic
7/28	Basic Skills Review for Classic Dialog Searchers
8/3	Getting Started on DialogLink 5
8/17	DialogWeb—Command
8/18	Basic Skills Review for Classic Dialog Searchers
8/24	Introduction to Patent Research Featuring DialogLink 5

### Cary, North Carolina

7/7	Introduction to Dialog Featuring DialogClassic
7/14	Monitoring Drug Patents
7/21	Basic Skills Review for Classic Dialog Searchers
8/11	Introduction to Dialog for Pharmaceutical Searchers
8/18	Competitive Intelligence in the Pharmaceutical Industry
8/25	DialogLink 5: New Features & Functionality

### Philadelphia, Pennsylvania

7/14	Introduction to Dialog Featuring DialogWeb
7/21	Basic Skills Review for Classic Dialog Searchers
8/11	Company Intelligence Seminar
8/18	Introduction to Dialog Featuring DialogWeb
8/25	Tracking a Pharmaceutical Product from Discovery to Postmarketing Surveillance

\*Sign up for the monthly training e-newsletter at [support.dialog.com/ newsletters/training/subscribe/](http://support.dialog.com/ newsletters/training/subscribe/)

## Chronolog™

The *Chronolog*  
(ISSN 0163-3732)  
is published by:

### Dialog

11000 Regency Parkway,  
Suite 10  
Cary, North Carolina  
27511 USA

1.919.462.8600 or  
1.800.334.2564  
Fax: 1.919.468.9890

Please address any  
comments or questions  
to [Dialog.Chronolog@  
thomson.com](mailto:Dialog.Chronolog@thomson.com)

DIALOG, DIALINDEX, DIALOG  
OnDisc, DialogLink, DIALORDER,  
First Release, OneSearch, ONTAP  
and PROFOUND are registered  
trademarks of The Dialog  
Corporation in the U.S. Patent and  
Trademark Office and in other  
jurisdictions. Chronolog, DataStar,  
DIALOG Headlines, DIALOG  
Homebase, DIALOGSelect,  
SourceOne and SitePrints  
are trademarks of The Dialog  
Corporation. All other brand and  
product names are trademarks  
of their respective owners. The  
contents of this publication are  
not copyrighted and may be  
freely reproduced.

W-302450 6/05

continued from page 7

## Dialog—The One-Stop Solution for Intellectual Property Research

### ► Use DialogLink 5 report features for post-processing

Download pre-made templates for patent and trademark reports using the new Get Templates feature in DialogLink 5 to create Microsoft® Excel and Word reports. You can create a Word report for a patent family, a country summary or community trademarks or create your own custom template. (Figure 3)

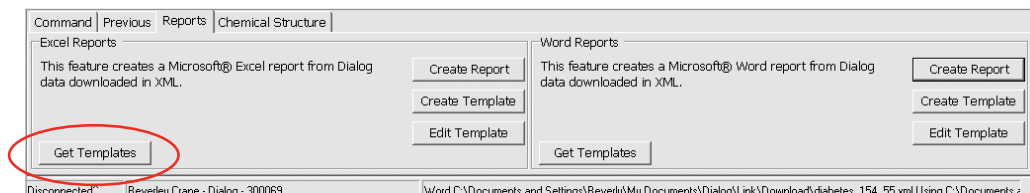


Figure 3

### TRAINING

A new patent series, including five patent classes, is designed to help you improve your patent searching skills. Topics include: Introduction to Patent Searching, Patent Families, Legal Status, Prior Art and Competitive Intelligence. See page 11 for dates of Web-based sessions. Check the Web site at [www.dialog.com/training](http://www.dialog.com/training) for the latest classroom training sessions or online courses covering trademarks and patent databases.

What are you missing by not searching Dialog?

## Dialog

11000 Regency Parkway, Suite 10  
Cary, North Carolina 27511 USA  
London SE1 9DE  
UNITED KINGDOM