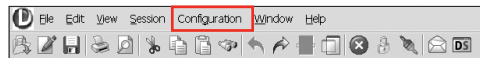


Preferences

DialogLink 5

In DialogLink 5, you can set preferences to define connections, subaccounts, billing options and search settings.

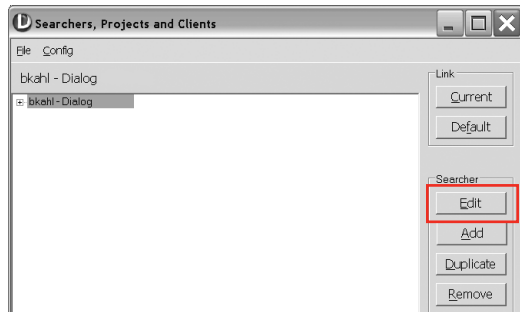
To set preferences, click Settings under the Configuration drop-down menu in the tool bar. You must be logged out of DialogLink 5.



The Searchers, Projects and Clients window lets you manage and track multiple projects and configure each with different subaccounts and settings. To set preferences for a searcher or a project, click the **Edit** button.

TIP

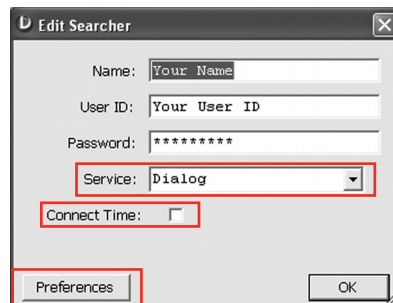
Switch to another user account for the current session by clicking the **Current** button, or switch to another default account by clicking the **Default** button. The new default account will then be used each time you log on in the future.



On the Edit Searcher window, you can select the service to which you'd like to connect: Dialog or Dialog Secure (uses HTTPS). You can also select how you'd prefer to be billed. (The default is DialUnits.) Click the **Preferences** button to continue.

TIP

If you do not want to save your password, enter a ? in this field. Then, each time you log on, you will be prompted to enter your password. You can use a ? in the User ID field if you search on multiple User IDs.



The Preferences button opens the Set Preferences window. In this window, you can choose a number of customization options to personalize DialogLink 5.

TIP

Move your mouse over the field names to view a definition. For example, if you move your mouse over the Show Results by File field name, the following text box displays:

Used with DialIndex and OneSearch.
Displays record count for individual files distinctly.

Similarly, if you move your mouse over the field itself, the corresponding Dialog command displays. For example, the KWIC Window field displays:

Set KWIC

The Show Settings checkbox at the bottom of the Set Preferences window ensures your settings are displayed in the **Retrieve** buffer each time you log on to DialogLink 5.0. If the box is left unchecked, your settings will be saved but will not display in the **Retrieve** buffer.

TIP

The Alias button lets you enter search strategies and save them under aliases, making the retrieval of your strategy much easier. For example, apply the alias "mysearch" to the following search:
`s (antifoul? or hydrophob?)`
Now, you can enter `s mysearch` in the **Type-Ahead** buffer and the target search runs automatically.

Customer Service & Support

Within North America: 1 (800) 3 DIALOG (334 2564)

Outside North America: +00 800 33 34 2564

E-mail: dialogcustomer@thomson.com

Online Support: support.dialog.com