

HowTo: Exporting Results from Dialog and Importing Into Innography Projects

September 29, 2009

Introduction

Innography supports importing data from several formats, including Dialog XML. The following document is a step-by-step walkthrough of exporting results from Dialog and importing them into an Innography project. This document was produced using DialogLink 5 from Dialog and the Innography Spring '09 release. Subsequent versions might require a document refresh.

Tutorial

Below are the steps to export a result set in XML format from Dialog and Import into Innography.

Step 1: Export a Result Set from Dialog

- (a) Open a Dialog command session, below we show using the DialogLink5 product.
- (b) Select a file to use, below we use file 351 – Derwent World Patent Index.
- (c) Perform a search, which will return a named search result set.
- (d) Export your result set as XML. Innography will accept a variety of Dialog XML formats, but all that is required for import is the patent numbers so we choose the PN format.

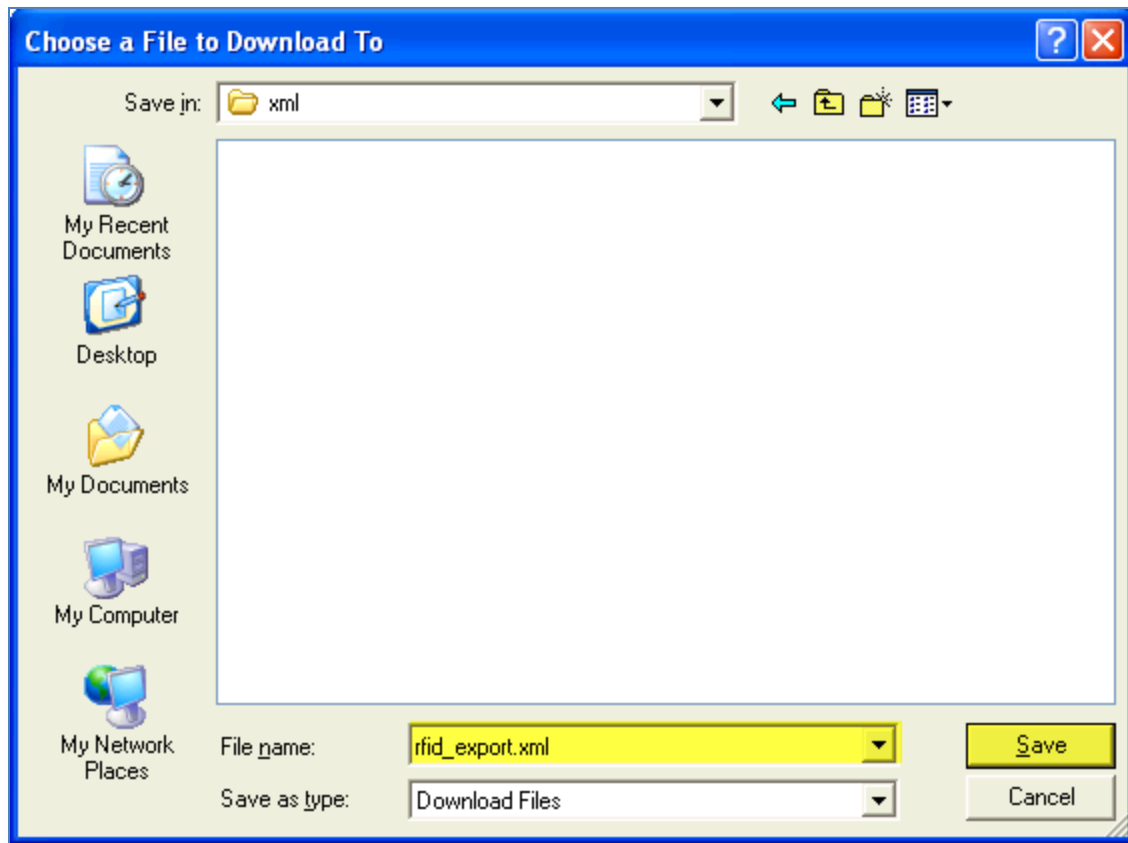
See the series of commands below

```
? b 351
[File 351] Derwent WPI 1963-2009/UD=200961
(c) 2009 Thomson Reuters. All rights reserved.

? s rfid
S1      18799      S RFID

? xml s1/PN/1-100
```

- (e) Then DialogLink will ask you to name the file that is to be saved, give the file a name and choose 'save':

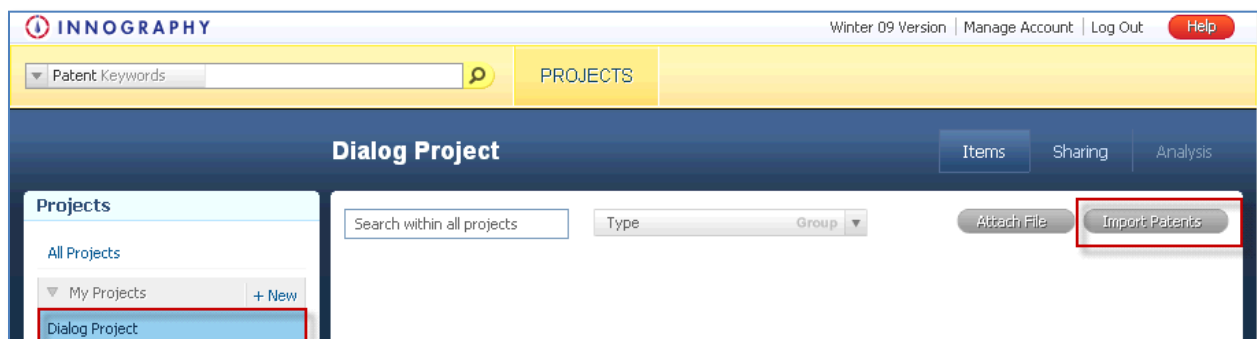


(f) When the export is complete, Dialog will let you know that the file was saved

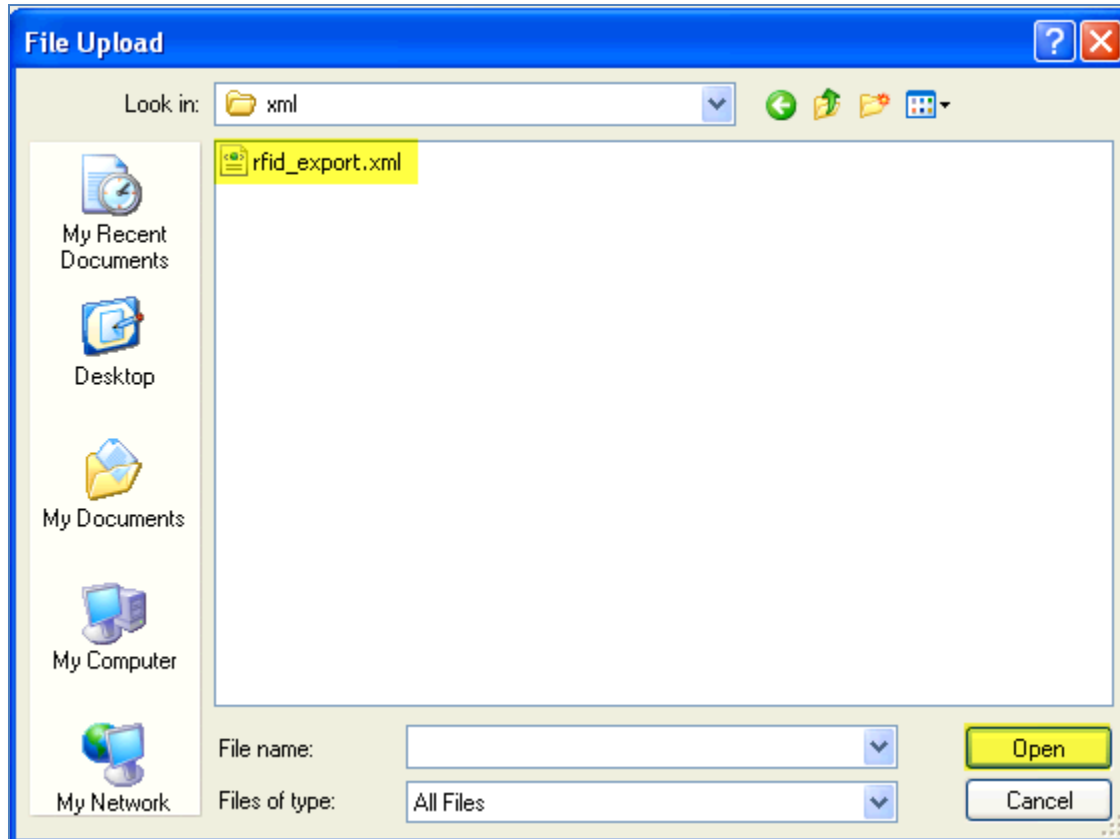
```
? xml s1/PN/1-100
100 records were written to E:\Dialog\Link\Download\xml\rfid_export.xml
```

Step 2: Import your result set into Innography

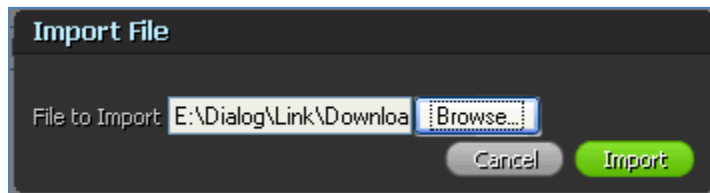
- Log into Innography, this will bring you to your project workspace.
- Select an existing project or create a new one if necessary. Once your project is selected, choose the 'Import Patents' button.



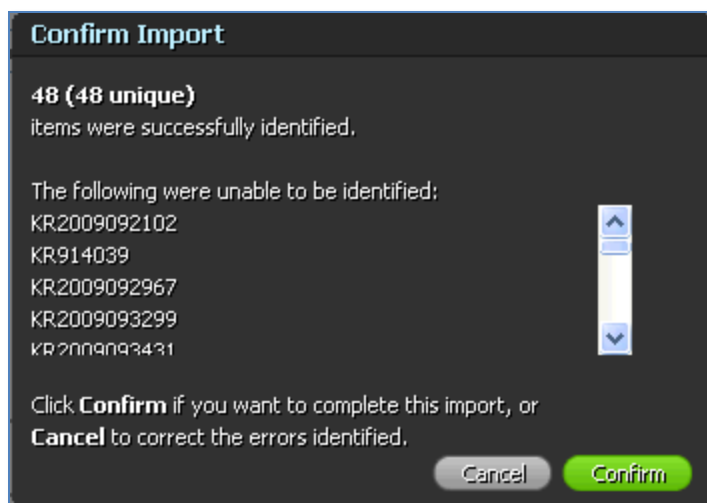
- (c) You will be prompted to select a file, choose the 'browse' button to open a file explorer and select the file that was exported from Dialog and press the 'Open' button:



- (d) The file name will appear in the text box, now select the 'Import' button.

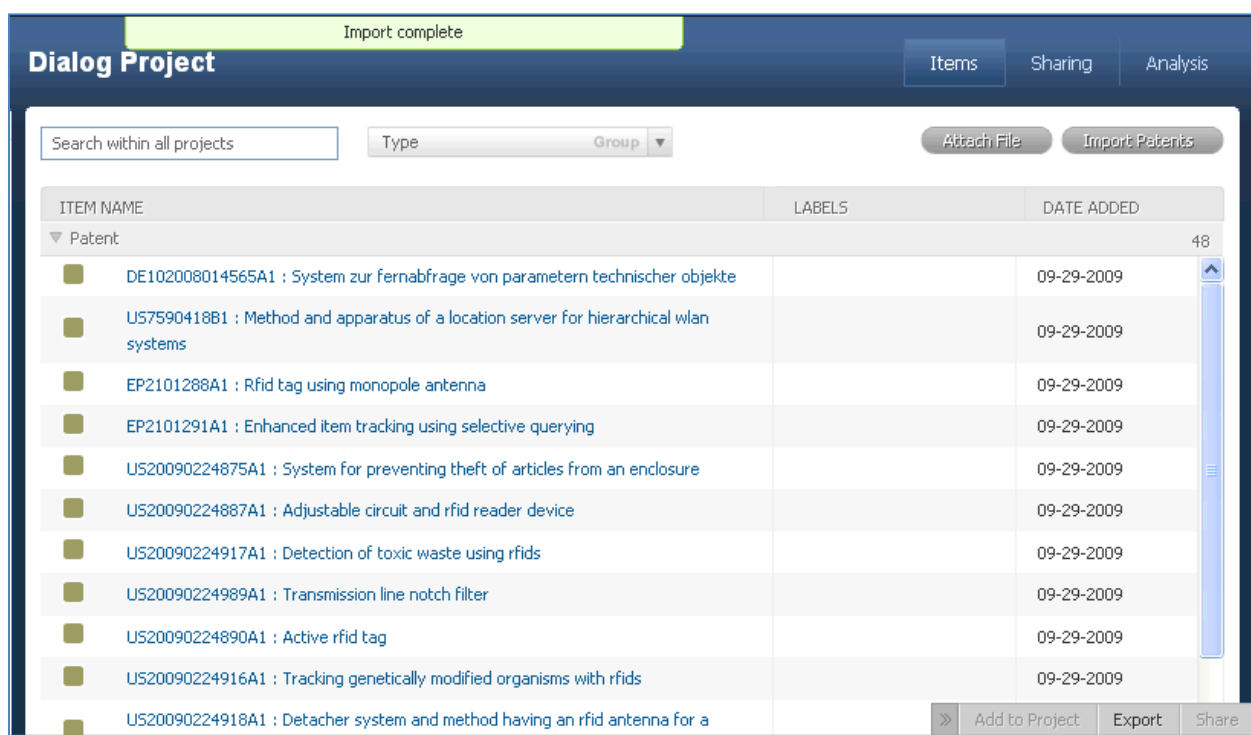


- (e) Innography will now attempt to import your patents. The next dialog screen you will see will report how many patents were successfully able to be indentified and which patent numbers could not be imported (if there were patents that could not be imported).



Note: When exporting from certain databases, which are ahead of INPADOC for several Asian jurisdictions¹ – you might notice some patents from these jurisdictions could not be imported (particularly if exporting your results in reverse chronological order).

- (f) Press the ‘Confirm’ button to complete your import, or cancel to cancel without importing any documents to your project. If you press confirm, you will see your imported patents in your project.



¹ For up to date coverage of the INPADOC DOCDB file, see <http://www.epo.org/patents/patent-information/raw-data/useful-tables.html>

Conclusion

In this document we described the two-step process for exporting patents from Dialog and into Innography. Please direct any questions about this process or this document to support@innography.com.