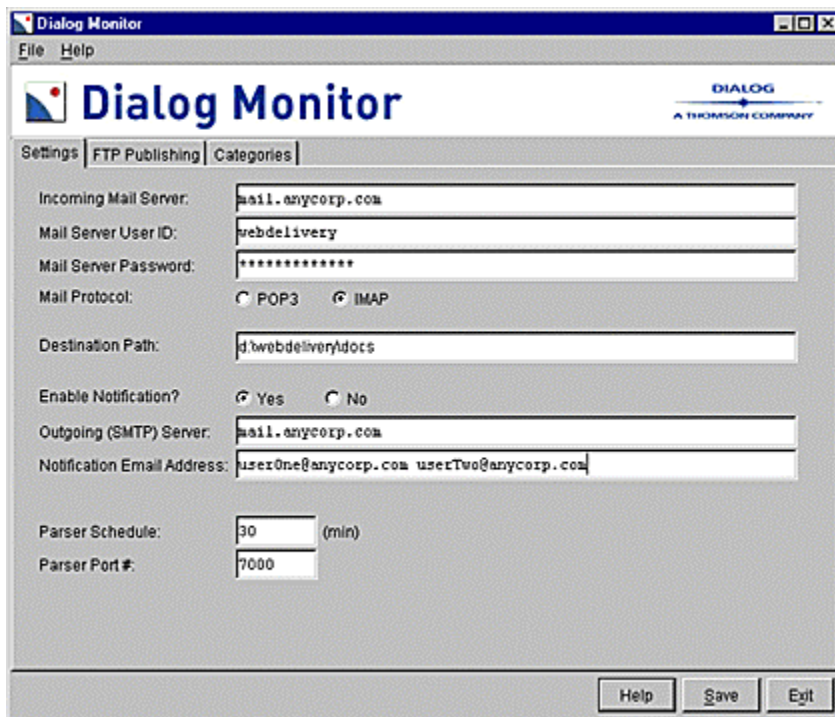


Introducing Dialog Monitor

Get Started: Settings

Download and install Dialog Monitor on your server or workstation. Open Dialog Monitor and input the settings for your environment.



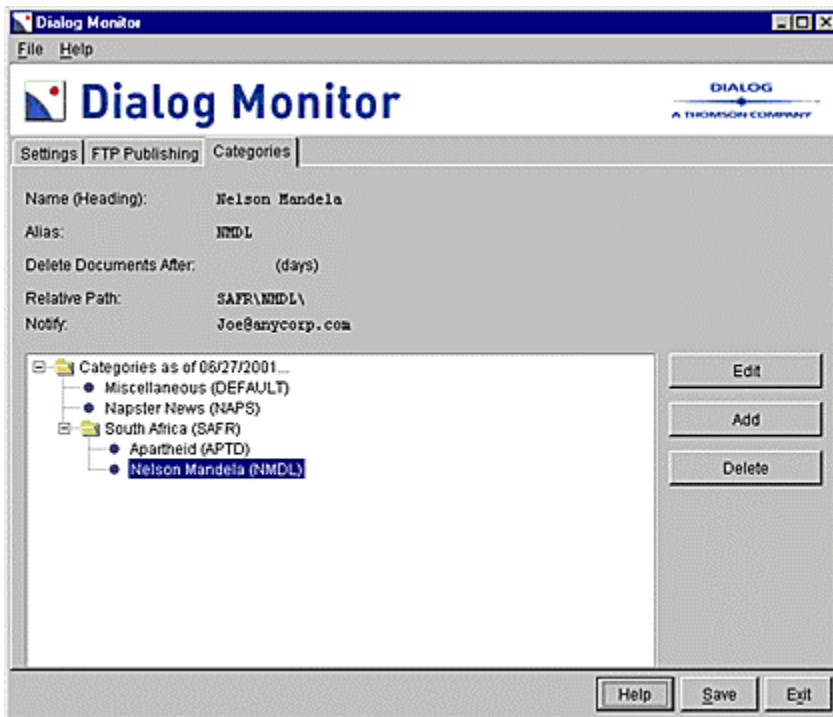
The **Settings** screen lets you enter

- server and email type, locations, and addresses
- notification email ID

The Categories Screen

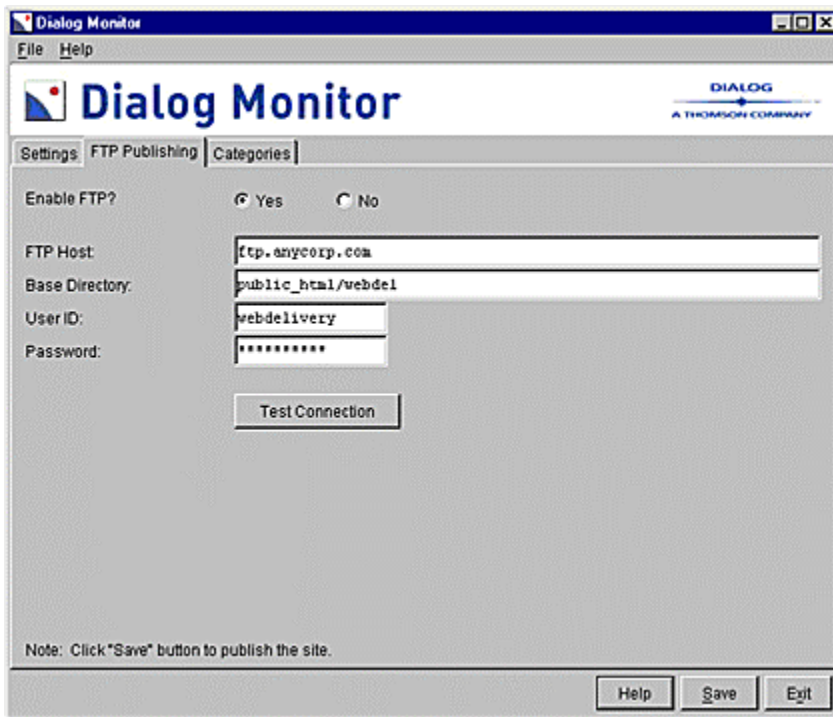
The **Categories** screen lets you

- create and edit categories for organizing your Dialog data
- indicate how often to delete titles and documents



Set Your Publishing Preferences

Dialog Monitor publishes via your network. Or, of desired, you can use the ftp publishing option.



Once you have completed and saved your entries, your site is automatically published!

Online Help

Refer to Online Help whenever you need to.



Dialog Monitor publishes a web site on your intranet. Use this site as designed or customize it by changing the text and graphics.

Sample Home Page



You can also set up categories and subcategories.



Title List

The title list includes the title and the date the document was posted.



Full Record

The full record displays in html format.



Dialog's Intranet Delivery Tool enhances information management

987654210 **Supplier Number:** 123456678 (THIS IS THE FULL TEXT)
Dialog's Intranet Delivery Tool enhances information management

News April 26, 1999
ISSN: 1234-5678
Language: English
Record Type: Fulltext
Word Count: 2329 **Line Count:** 00186

Text:

The Dialog Corporation plc ('Dialog') (NASDAQ: DIALY, LSE: DLG) announces the Intranet Delivery Tool, a major enhancement to the Dialog Intranet Toolkit that enables information professionals to easily share Dialog's customized current awareness alerts and interactive search results with the entire organization over the corporate intranet.

Dialog Commands

Direct your search output to your Dialog Monitor intranet site using Dialog commands.

First: Use any of the following Dialog products to create your search.

Next: Follow the links for specific instructions for each product.

Note: Online help is available by typing `?netdeliv` on the command line in DialogClassic and DialogWeb.

For Dialog Classic on the Web or Classic Dialog

The following Dialog commands are used to direct the results of Dialog searches and Dialog Alerts to your Dialog Monitor web site.

EDIT ADDRESS EMAIL

Dialog searchers must create and store an email address for Dialog Monitor using the EDIT ADDRESS EMAIL command. To create and store an email address on Dialog

1. At the command prompt enter **edit address email**.
2. Select the Internet option.
3. Enter the email address (the Mail Server ID and Mail Server specified in Settings, for example **webdelivery@anycorp.com**). The email address should be dedicated to Dialog Monitor. Your email administrator can establish this account for you.
4. Save and name the address. The address name can be one to six characters, for example, **webdoc**. Dialog assigns two additional characters to the name for storage on

the Dialog system, for example **acwebdoc**. If you do not name the address, Dialog automatically assigns the address a serial number.

PRINT TITLE

The PRINT TITLE command is used with the PRINT command to direct Dialog search and Dialog Alert results to your Dialog Monitor web site. The PRINT TITLE command must also include the alias associated with the category that indicates where the search results are to be delivered, for example, **print title mktg**.

PRINT

The PRINT command includes the Dialog set number, Dialog format number, and the item numbers of the records to be printed. For Dialog Monitor, the PRINT command must also include the HTML specification, and the email address code for Intranet Delivery. An [ERA™](#) archive specification must also be included. For example, to request intranet delivery of all the records from set 2, in Dialog format 9, to the webdoc email address, and to specify archive access for 20 individuals in the organization, enter **pr s2/9/all html arc 20 addr acwebdoc**.

Note: The following PRINT command options are not supported by the Monitor

- Format 4 (where Format 4 has tagged fields)
- User Defined Formats (UDFs)
- TAGged output

Dialog Alerts

To have information on your search topic automatically sent to your web site on a regular basis, use the Dialog Alert feature. To create a Dialog Alert, enter your PRINT command then enter the SAVE ALERT command followed by an optional 1-6 character name and an Alert frequency, for example, **save alert webdel day**.

Note: Not all databases let you specify the frequency of your Alert.

Sending Results with Dialog Web

Guided Search

If you are using Guided Search on **Dialog Web** you can send your search results to your Dialog Monitor web site.

To send Guided Search results to your Dialog Monitor web site:

1. Run a search.
2. When the **Picklist** displays, select one or more records.
3. Select the "Email/Fax/Postal..." option from the *destination* drop-down list.
4. Click "display/send" to open the **Send Results** form.

To complete the **Send Results** form for Dialog Monitor:

1. In the *Description* text box, enter the alias associated with the category where the search results are to be delivered. If you do not enter an alias, the results will be delivered to the category page associated with the alias (DEFAULT).

2. Select either the "Long" or "Full Record" option from the *Format* drop-down list. "Full Record" is the default.
3. Select "HTML" from the *Output as* drop-down list.
4. Select the web delivery designated email address from the list of stored addresses or create the address using the Internet email option and Create New.
5. In the *ERA™ Archiving* text box, enter the number that indicates how many people will be accessing the data from your intranet site.
6. Click Send.

Command Search

If you are using Command Search on **Dialog Web** you can send your search results to your intranet delivery site by entering the appropriate Dialog commands in the *Dialog Command* text box or you can use the **Send Results** feature.

To use the **Send Results** feature:

1. On the **Records** page, select the record(s) you want to send.
2. Click "Send Results" to display the **Send Search Results** form.
3. Verify the set number displayed in the *Set Number* text box. The default is the set from which you selected records to display.
4. Change the format if necessary. The default is the format selected on the display page.
5. Verify the records. The default is the record number(s) of the records selected on the display page. You can enter a single record, a range of records, or non-sequential record numbers up to a maximum of 5,000 records.
Note: Records with images can only be sent via postal delivery.
6. Select the "HTML" option from the *Output Type* drop-down list.
7. Do not select the "Records Only" option.
8. From the *Address* drop-down list, select the address code associated with your Monitor. You can use the [Address Book](#) link to look up or create the address.
9. In the *Subject Line* text box enter the alias associated with the category where the results are to be delivered. If you do not enter an alias, the results will be delivered to the category page associated with the default alias.
10. In the *ERA™ Archiving* text box, enter the number that indicates how many people will be accessing the data from your intranet site.
11. Click Send.

Dialog is the world's leading information services provider, offering extensive coverage of business, news, scientific, medical and technical information. To find out more about how Dialog can help you find the information you need, contact our office below, or speak directly with your Account Representative.

DIALOG

2250 Perimeter Park Drive
Suite 300
Morrisville, NC 27560
United States
(1) 919.804.6400
(1) 800-3-DIALOG (customer service)

© 2002 Dialog All designated trademarks are property of The Dialog Corporation or its subsidiaries. Registered trademarks are registered by The Dialog Corporation or its subsidiaries, U.S. Patent and Trademark Office. All other marks are trademarks or registered trademarks of their respective owners.